

## Product datasheet for **TA387665M**

### **AMPD3 Rabbit Polyclonal Antibody**

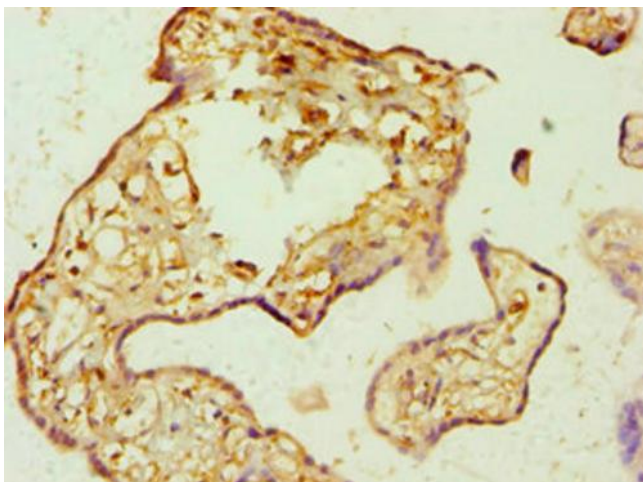
#### **Product data:**

Product Type:	Primary Antibodies
Applications:	IHC, WB
Recommended Dilution:	Recommended dilution: WB:1:500-1:2000, IHC:1:20-1:200
Reactivity:	Mouse, Human
Host:	Rabbit
Isotype:	IgG
Clonality:	Polyclonal
Immunogen:	Recombinant Human AMP deaminase 3 protein (1-260AA)
Formulation:	PBS with 0.02% sodium azide, 50% glycerol, pH7.3.
Concentration:	lot specific
Purification:	Antigen Affinity Purified
Conjugation:	Unconjugated
Storage:	Upon receipt, store at -20°C or -80°C. Avoid repeated freeze.
Stability:	1 year from dispatch.
Database Link:	<a href="#">Q01432</a>
Background:	AMP deaminase plays a critical role in energy metabolism.

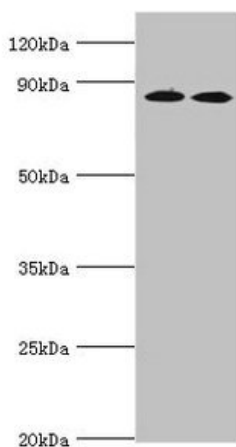


[View online »](#)

## Product images:



Immunohistochemistry of paraffin-embedded human placenta tissue using [TA387665] at dilution of 1:100



Western blot  
All lanes: AMP deaminase 3 antibody at 2 $\mu$ g/ml  
Lane 1: NIH/3T3 whole cell lysate  
Lane 2: 293T whole cell lysate  
Lane 3: Mouse lung tissue  
Secondary  
Goat polyclonal to rabbit IgG at 1/10000 dilution  
Predicted band size: 89, 25, 77, 90, 72 kDa  
Observed band size: 89 kDa