

Product datasheet for **TA387665**

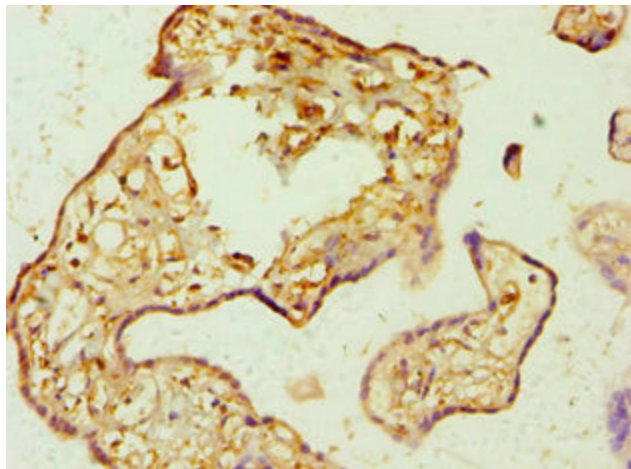
AMPD3 Rabbit Polyclonal Antibody

Product data:

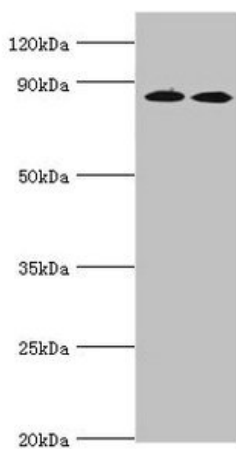
| | |
|-----------------------|---|
| Product Type: | Primary Antibodies |
| Applications: | IHC, WB |
| Recommended Dilution: | Recommended dilution: WB:1:500-1:2000, IHC:1:20-1:200 |
| Reactivity: | Mouse, Human |
| Host: | Rabbit |
| Isotype: | IgG |
| Clonality: | Polyclonal |
| Immunogen: | Recombinant Human AMP deaminase 3 protein (1-260AA) |
| Formulation: | PBS with 0.02% sodium azide, 50% glycerol, pH7.3. |
| Concentration: | lot specific |
| Purification: | Antigen Affinity Purified |
| Conjugation: | Unconjugated |
| Storage: | Upon receipt, store at -20°C or -80°C. Avoid repeated freeze. |
| Stability: | 1 year from dispatch. |
| Database Link: | Q01432 |
| Background: | AMP deaminase plays a critical role in energy metabolism. |



[View online »](#)

Product images:

Immunohistochemistry of paraffin-embedded human placenta tissue using TA387665 at dilution of 1:100



Western blot
All lanes: AMP deaminase 3 antibody at 2 μ g/ml
Lane 1: NIH/3T3 whole cell lysate
Lane 2: 293T whole cell lysate
Lane 3: Mouse lung tissue
Secondary
Goat polyclonal to rabbit IgG at 1/10000 dilution
Predicted band size: 89, 25, 77, 90, 72 kDa
Observed band size: 89 kDa