

## Product datasheet for **TA387641M**

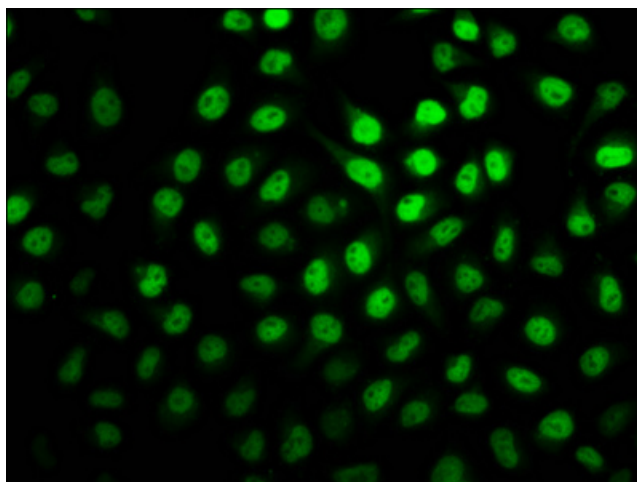
### H2BC4 Rabbit Polyclonal Antibody

#### Product data:

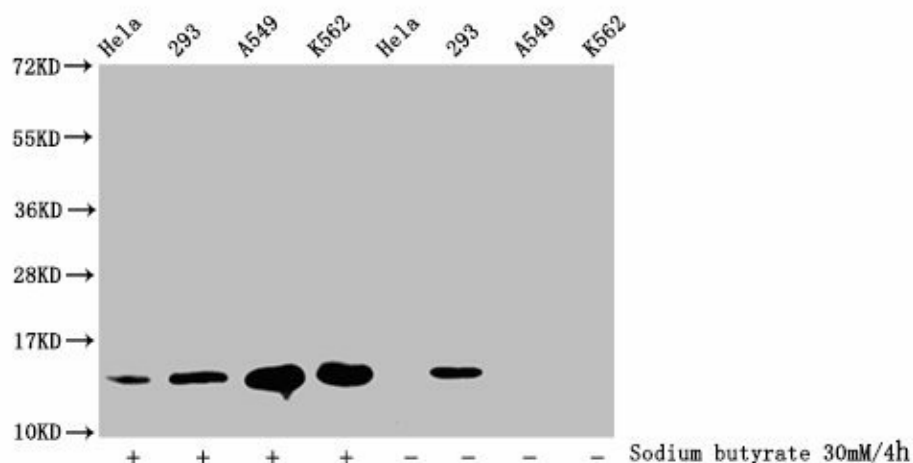
Product Type:	Primary Antibodies
Applications:	IF, WB
Recommended Dilution:	Recommended dilution: WB:1:100-1:1000, IF:1:1-1:10
Reactivity:	Human
Host:	Rabbit
Isotype:	IgG
Clonality:	Polyclonal
Immunogen:	Peptide sequence around site of 2-hydroxyisobutyryl-Lys (20) derived from Human Histone H2B type 1-C/E/F/G/I
Formulation:	Preservative: 0.03% Proclin 300 Constituents: 50% Glycerol, 0.01M PBS, pH 7.4
Concentration:	lot specific
Purification:	Antigen Affinity Purified
Conjugation:	Unconjugated
Storage:	Upon receipt, store at -20°C or -80°C. Avoid repeated freeze.
Stability:	1 year from dispatch.
Database Link:	<a href="#">P62807</a>
Background:	Core component of nucleosome. Nucleosomes wrap and compact DNA into chromatin, limiting DNA accessibility to the cellular machineries which require DNA as a template. Histones thereby play a central role in transcription regulation, DNA repair, DNA replication and chromosomal stability. DNA accessibility is regulated via a complex set of post-translational modifications of histones, also called histone code, and nucleosome remodeling.


[View online »](#)

## Product images:



Immunofluorescence staining of HeLa cells (treated with 30mM sodium butyrate for 4h) with [TA387641] at 1:7.5, counter-stained with DAPI. The cells were fixed in 4% formaldehyde, permeabilized using 0.2% Triton X-100 and blocked in 10% normal Goat Serum. The cells were then incubated with the antibody overnight at 4°C. The secondary antibody was Alexa Fluor 488-conjugated AffiniPure Goat Anti-Rabbit IgG(H+L).



### Western Blot

Detected samples: HeLa whole cell lysate, 293 whole cell lysate, A549 whole cell lysate, K562 whole cell lysate; Untreated (-) or treated (+) with 30mM sodium butyrate for 4h  
 All lanes: HIST1H2BC antibody at 1:100  
 Secondary  
 Goat polyclonal to rabbit IgG at 1/50000 dilution  
 Predicted band size: 14 kDa  
 Observed band size: 14 kDa