

## Product datasheet for **TA387626**

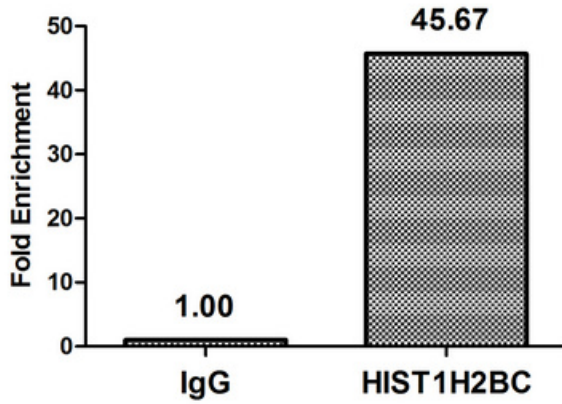
### H2BC4 Rabbit Polyclonal Antibody

#### Product data:

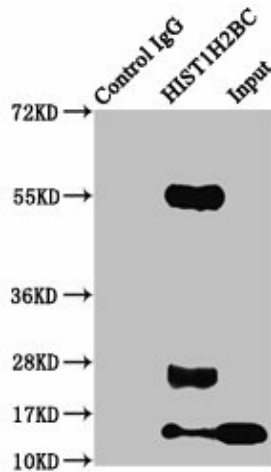
Product Type:	Primary Antibodies
Applications:	ChIP, IP, WB
Recommended Dilution:	Recommended dilution: WB:1:100-1:1000, IP:1:200-1:2000
Reactivity:	Mouse, Human
Host:	Rabbit
Isotype:	IgG
Clonality:	Polyclonal
Immunogen:	Peptide sequence around site of Lys (116) derived from Human Histone H2B type 1-C/E/F/G/I
Formulation:	Preservative: 0.03% Proclin 300 Constituents: 50% Glycerol, 0.01M PBS, pH 7.4
Concentration:	lot specific
Purification:	Antigen Affinity Purified
Conjugation:	Unconjugated
Storage:	Upon receipt, store at -20°C or -80°C. Avoid repeated freeze.
Stability:	1 year from dispatch.
Database Link:	<a href="#">P62807</a>
Background:	Core component of nucleosome. Nucleosomes wrap and compact DNA into chromatin, limiting DNA accessibility to the cellular machineries which require DNA as a template. Histones thereby play a central role in transcription regulation, DNA repair, DNA replication and chromosomal stability. DNA accessibility is regulated via a complex set of post-translational modifications of histones, also called histone code, and nucleosome remodeling.



[View online »](#)

**Product images:**


Chromatin Immunoprecipitation HeLa ( $4 \times 10^6$ ) were treated with Micrococcal Nuclease, sonicated, and immunoprecipitated with 5 $\mu$ g anti-HIST1H2BC (TA387626) or a control normal rabbit IgG. The resulting ChIP DNA was quantified using real-time PCR with primers against the  $\beta$ -Globin promoter.

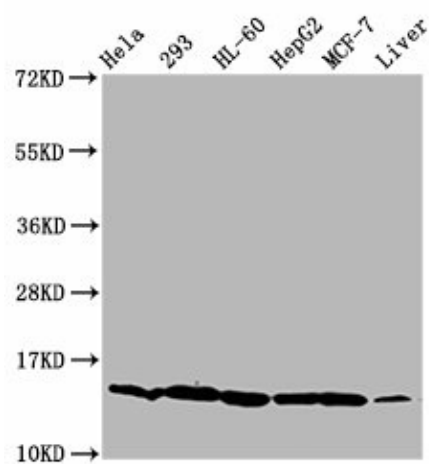


Immunoprecipitating HIST1H2BC in MCF-7 whole cell lysate

Lane 1: Rabbit control IgG instead of TA387626 in MCF-7 whole cell lysate. For western blotting, a HRP-conjugated Protein G antibody was used as the secondary antibody (1/2000)

Lane 2: TA387626 (5 $\mu$ g) + MCF-7 whole cell lysate (500 $\mu$ g)

Lane 3: MCF-7 whole cell lysate (20 $\mu$ g)



#### Western Blot

Positive WB detected in: HeLa whole cell lysate, 293 whole cell lysate, HL60 whole cell lysate, HepG2 whole cell lysate, MCF-7 whole cell lysate, Mouse liver tissue

All lanes: HIST1H2BC antibody at 0.92 $\mu$ g/ml

Secondary

Goat polyclonal to rabbit IgG at 1/50000 dilution

Predicted band size: 14 kDa

Observed band size: 14 kDa