

Product datasheet for **TA387610M**

RAB5B Rabbit Polyclonal Antibody

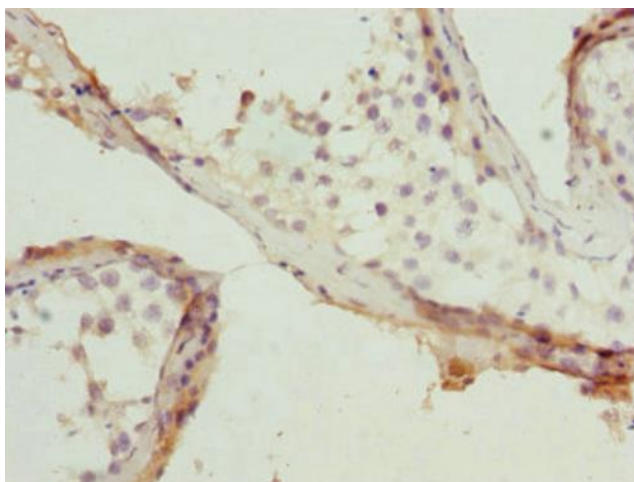
Product data:

Product Type:	Primary Antibodies
Applications:	IHC, WB
Recommended Dilution:	Recommended dilution: WB:1:1000-1:5000, IHC:1:20-1:200
Reactivity:	Human
Host:	Rabbit
Isotype:	IgG
Clonality:	Polyclonal
Immunogen:	Recombinant Human Ras-related protein Rab-5B protein (1-215AA)
Formulation:	PBS with 0.02% sodium azide, 50% glycerol, pH7.3.
Concentration:	lot specific
Purification:	Antigen Affinity Purified
Conjugation:	Unconjugated
Storage:	Upon receipt, store at -20°C or -80°C. Avoid repeated freeze.
Stability:	1 year from dispatch.
Database Link:	P61020
Background:	Protein transport. Probably involved in vesicular traffic (By similarity).

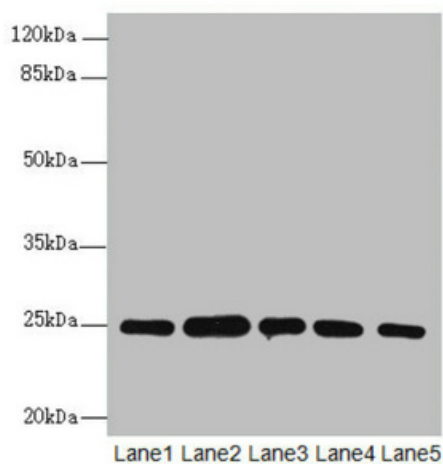


[View online »](#)

Product images:



Immunohistochemistry of paraffin-embedded human testis tissue using [TA387610] at dilution of 1:100



Western blot

All lanes: RAB5B antibody at 1.66µg/ml

Lane 1: A431 whole cell lysate

Lane 2: Hela whole cell lysate

Lane 3: Jurkat whole cell lysate

Lane 4: 293T whole cell lysate

Lane 5: HepG2 whole cell lysate

Secondary

Goat polyclonal to rabbit IgG at 1/10000 dilution

Predicted band size: 24, 20 kDa

Observed band size: 24, 31 kDa