

Product datasheet for **TA387610**

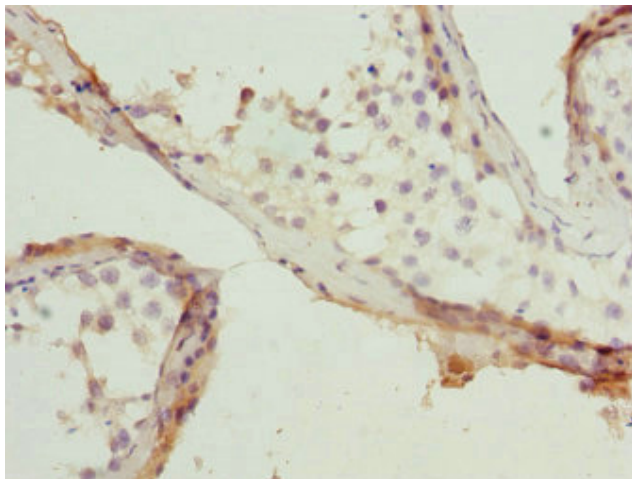
RAB5B Rabbit Polyclonal Antibody

Product data:

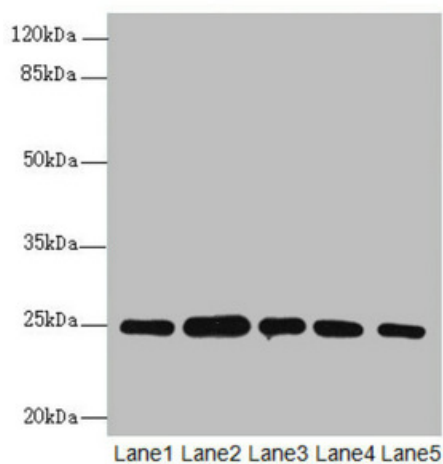
Product Type:	Primary Antibodies
Applications:	IHC, WB
Recommended Dilution:	Recommended dilution: WB:1:1000-1:5000, IHC:1:20-1:200
Reactivity:	Human
Host:	Rabbit
Isotype:	IgG
Clonality:	Polyclonal
Immunogen:	Recombinant Human Ras-related protein Rab-5B protein (1-215AA)
Formulation:	PBS with 0.02% sodium azide, 50% glycerol, pH7.3.
Concentration:	lot specific
Purification:	Antigen Affinity Purified
Conjugation:	Unconjugated
Storage:	Upon receipt, store at -20°C or -80°C. Avoid repeated freeze.
Stability:	1 year from dispatch.
Database Link:	P61020
Background:	Protein transport. Probably involved in vesicular traffic (By similarity).



[View online »](#)

Product images:

Immunohistochemistry of paraffin-embedded human testis tissue using TA387610 at dilution of 1:100



Western blot
All lanes: RAB5B antibody at 1.66 μ g/ml
Lane 1: A431 whole cell lysate
Lane 2: HeLa whole cell lysate
Lane 3: Jurkat whole cell lysate
Lane 4: 293T whole cell lysate
Lane 5: HepG2 whole cell lysate
Secondary
Goat polyclonal to rabbit IgG at 1/10000 dilution
Predicted band size: 24, 20 kDa
Observed band size: 24, 31 kDa