

## Product datasheet for **TA387603**

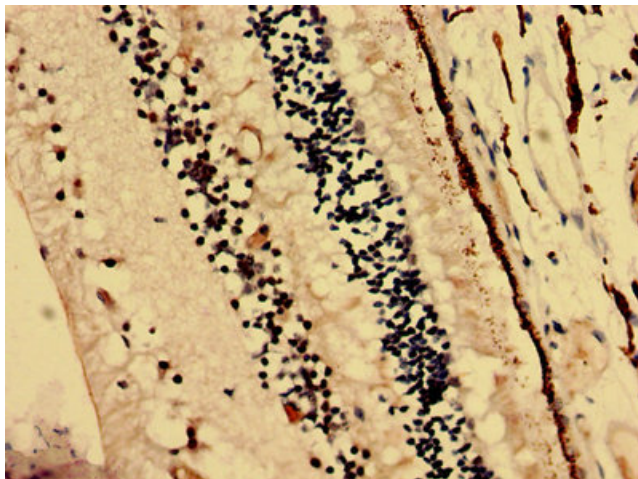
### CRYBA4 Rabbit Polyclonal Antibody

#### Product data:

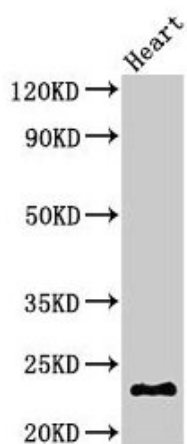
Product Type:	Primary Antibodies
Applications:	IHC, WB
Recommended Dilution:	Recommended dilution: WB:1:500-1:5000, IHC:1:20-1:200
Reactivity:	Mouse, Human
Host:	Rabbit
Isotype:	IgG
Clonality:	Polyclonal
Immunogen:	Recombinant Human Beta-crystallin A4 protein (2-196AA)
Formulation:	Preservative: 0.03% Proclin 300 Constituents: 50% Glycerol, 0.01M PBS, PH 7.4
Concentration:	lot specific
Purification:	>95%, Protein G purified
Conjugation:	Unconjugated
Storage:	Upon receipt, store at -20°C or -80°C. Avoid repeated freeze.
Stability:	1 year from dispatch.
Database Link:	<a href="#">P53673</a>
Background:	Crystallins are the dominant structural components of the vertebrate eye lens.



[View online »](#)

**Product images:**

Immunohistochemistry analysis of human eye tissue using TA387603 at dilution of 1:100



Western Blot  
Positive WB detected in: Mouse heart tissue  
All lanes: CRYBA4 antibody at 3µg/ml  
Secondary  
Goat polyclonal to rabbit IgG at 1/50000 dilution  
Predicted band size: 23 kDa  
Observed band size: 23 kDa