

## Product datasheet for **TA387602M**

### **FUT6 Rabbit Polyclonal Antibody**

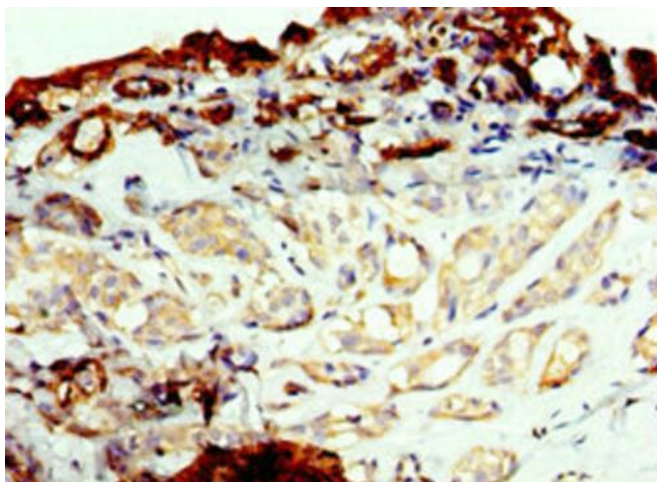
#### **Product data:**

Product Type:	Primary Antibodies
Applications:	IHC, WB
Recommended Dilution:	Recommended dilution: WB:1:500-1:2000, IHC:1:20-1:200
Reactivity:	Human
Host:	Rabbit
Isotype:	IgG
Clonality:	Polyclonal
Immunogen:	Recombinant Human Alpha-(1,3)-fucosyltransferase 6 protein (170-359AA)
Formulation:	PBS with 0.02% sodium azide, 50% glycerol, pH7.3.
Concentration:	lot specific
Purification:	Antigen Affinity Purified
Conjugation:	Unconjugated
Storage:	Upon receipt, store at -20°C or -80°C. Avoid repeated freeze.
Stability:	1 year from dispatch.
Database Link:	<a href="#">P51993</a>
Background:	Enzyme involved in the biosynthesis of the E-Selectin ligand, sialyl-Lewis X. Catalyzes the transfer of fucose from GDP-beta-fucose to alpha-2,3 sialylated substrates.

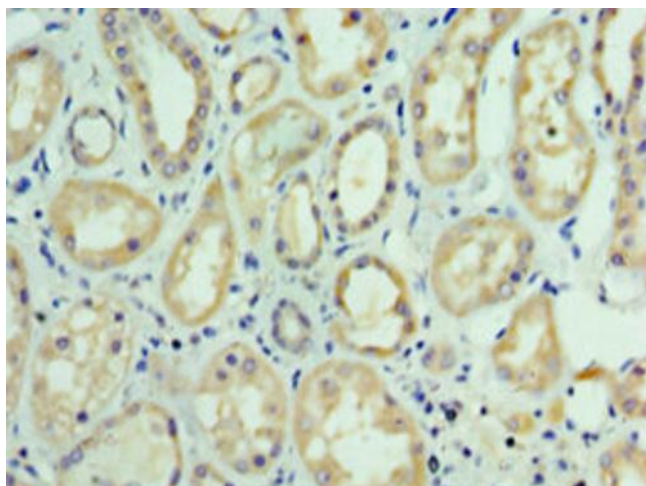


[View online »](#)

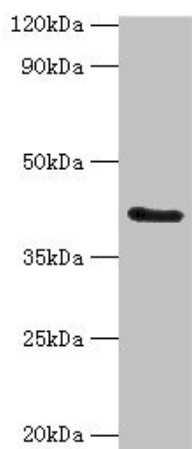
**Product images:**



Immunohistochemistry of paraffin-embedded human breast cancer using [TA387602] at dilution of 1:100



Immunohistochemistry of paraffin-embedded human kidney tissue using [TA387602] at dilution of 1:100



Western blot

All lanes: FUT6 antibody at 4µg/ml + HeLa whole cell lysate

Secondary

Goat polyclonal to rabbit IgG at 1/10000 dilution

Predicted band size: 42, 43 kDa

Observed band size: 42 kDa