

## Product datasheet for **TA387602**

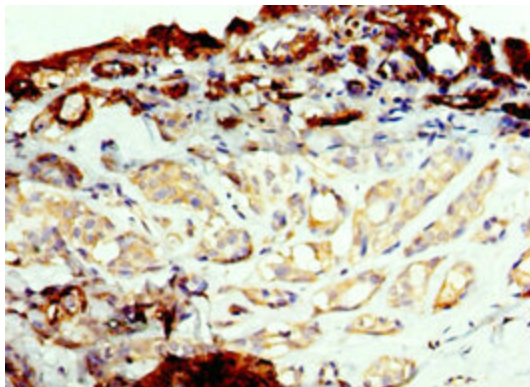
### **FUT6 Rabbit Polyclonal Antibody**

#### **Product data:**

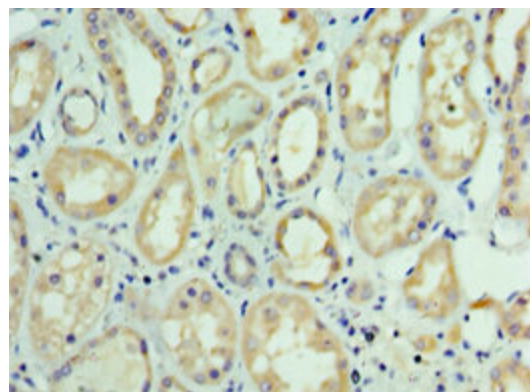
<b>Product Type:</b>	Primary Antibodies
<b>Applications:</b>	IHC, WB
<b>Recommended Dilution:</b>	Recommended dilution: WB:1:500-1:2000, IHC:1:20-1:200
<b>Reactivity:</b>	Human
<b>Host:</b>	Rabbit
<b>Isotype:</b>	IgG
<b>Clonality:</b>	Polyclonal
<b>Immunogen:</b>	Recombinant Human Alpha-(1,3)-fucosyltransferase 6 protein (170-359AA)
<b>Formulation:</b>	PBS with 0.02% sodium azide, 50% glycerol, pH7.3.
<b>Concentration:</b>	lot specific
<b>Purification:</b>	Antigen Affinity Purified
<b>Conjugation:</b>	Unconjugated
<b>Storage:</b>	Upon receipt, store at -20°C or -80°C. Avoid repeated freeze.
<b>Stability:</b>	1 year from dispatch.
<b>Database Link:</b>	<a href="#">P51993</a>
<b>Background:</b>	Enzyme involved in the biosynthesis of the E-Selectin ligand, sialyl-Lewis X. Catalyzes the transfer of fucose from GDP-beta-fucose to alpha-2,3 sialylated substrates.



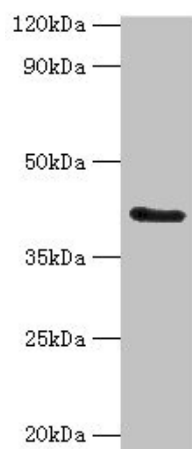
[View online »](#)

**Product images:**

Immunohistochemistry of paraffin-embedded human breast cancer using TA387602 at dilution of 1:100



Immunohistochemistry of paraffin-embedded human kidney tissue using TA387602 at dilution of 1:100



Western blot

All lanes: FUT6 antibody at 4 $\mu$ g/ml + HeLa whole cell lysate

Secondary

Goat polyclonal to rabbit IgG at 1/10000 dilution

Predicted band size: 42, 43 kDa

Observed band size: 42 kDa