

Product datasheet for **TA387600**

CRIP1 Rabbit Polyclonal Antibody

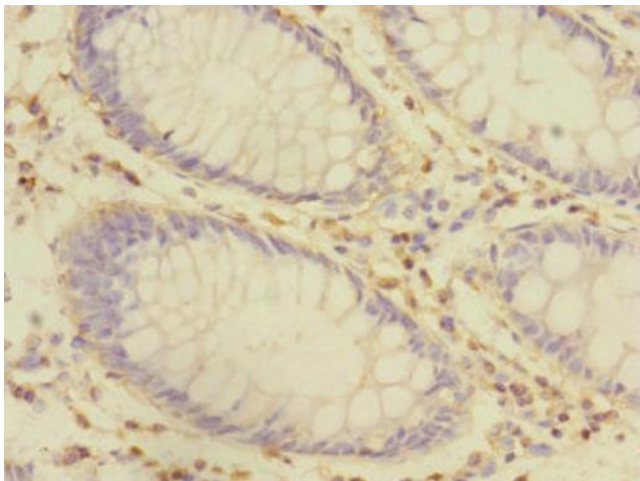
Product data:

Product Type:	Primary Antibodies
Applications:	IHC, WB
Recommended Dilution:	Recommended dilution: WB:1:1000-1:5000, IHC:1:20-1:200
Reactivity:	Human
Host:	Rabbit
Isotype:	IgG
Clonality:	Polyclonal
Immunogen:	Recombinant Human Cysteine-rich protein 1 protein (1-77AA)
Formulation:	PBS with 0.02% sodium azide, 50% glycerol, pH7.3.
Concentration:	lot specific
Purification:	Antigen Affinity Purified
Conjugation:	Unconjugated
Storage:	Upon receipt, store at -20°C or -80°C. Avoid repeated freeze.
Stability:	1 year from dispatch.
Database Link:	P50238
Background:	Seems to have a role in zinc absorption and may function as an intracellular zinc transport protein.

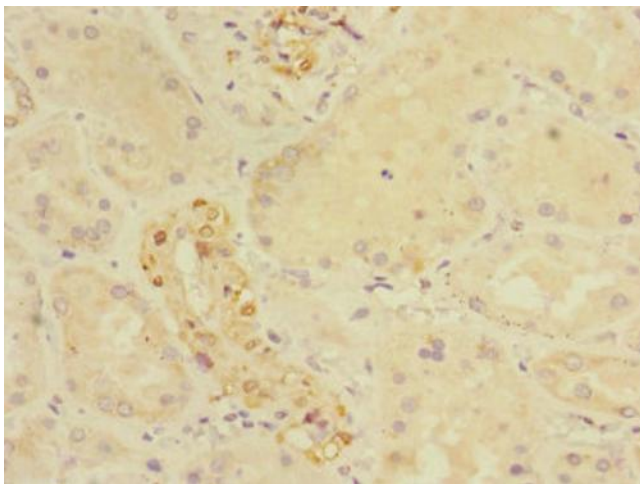


[View online »](#)

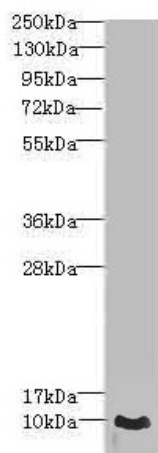
Product images:



Immunohistochemistry of paraffin-embedded human colon cancer using TA387600 at dilution of 1:100



Immunohistochemistry of paraffin-embedded human kidney tissue using TA387600 at dilution of 1:100



Western blot

All lanes: CRIP1 antibody at 1.44µg/ml + PC-3 whole cell lysate

Secondary

Goat polyclonal to rabbit IgG at 1/10000 dilution

Predicted band size: 9 kDa

Observed band size: 9 kDa