

Product datasheet for **TA387598M**

GLUD2 Rabbit Polyclonal Antibody

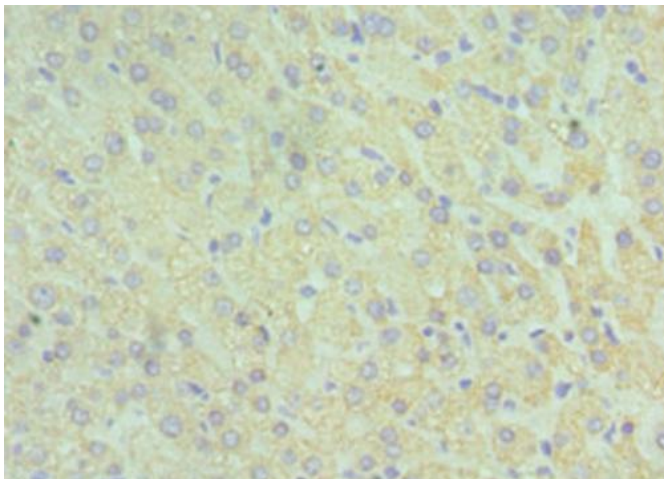
Product data:

Product Type:	Primary Antibodies
Applications:	IHC, WB
Recommended Dilution:	Recommended dilution: WB:1:500-1:2000, IHC:1:20-1:200
Reactivity:	Mouse, Rat, Human
Host:	Rabbit
Isotype:	IgG
Clonality:	Polyclonal
Immunogen:	Recombinant Human Glutamate dehydrogenase 2, mitochondrial protein (319-558AA)
Formulation:	PBS with 0.02% sodium azide, 50% glycerol, pH7.3.
Concentration:	lot specific
Purification:	Antigen Affinity Purified
Conjugation:	Unconjugated
Storage:	Upon receipt, store at -20°C or -80°C. Avoid repeated freeze.
Stability:	1 year from dispatch.
Database Link:	P49448
Background:	Important for recycling the chief excitatory neurotransmitter, glutamate, during neurotransmission.

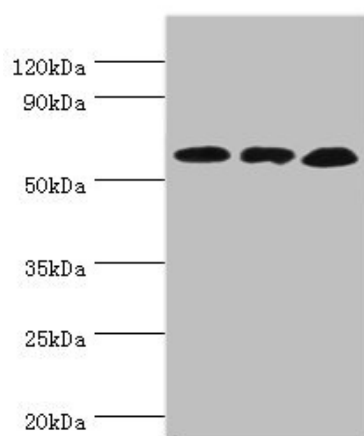


[View online »](#)

Product images:



Immunohistochemistry of paraffin-embedded human liver tissue using [TA387598] at dilution of 1:100



Western blot

All lanes: Glutamate dehydrogenase 2, mitochondrial antibody at 4µg/ml

Lane 1: Mouse brain tissue

Lane 2: 293T whole cell lysate

Lane 3: Rat brain tissue

Secondary

Goat polyclonal to rabbit IgG at 1/10000 dilution

Predicted band size: 61 kDa

Observed band size: 61 kDa