

## Product datasheet for **TA387594**

### KCNJ1 Rabbit Polyclonal Antibody

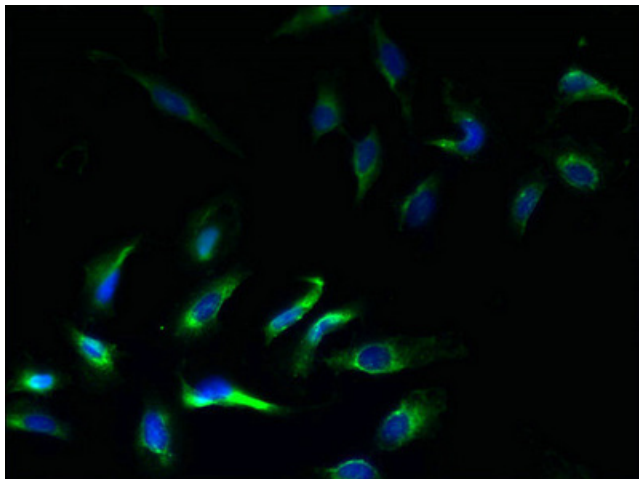
#### Product data:

|                       |  |
|-----------------------|--|
| Product Type:         | Primary Antibodies   |
| Applications:         | IF, WB   |
| Recommended Dilution: | Recommended dilution: WB:1:1000-1:5000, IF:1:50-1:200                                    |
| Reactivity:           | Human  |
| Host:                 | Rabbit   |
| Isotype:              | IgG  |
| Clonality:            | Polyclonal   |
| Immunogen:            | Recombinant Human ATP-sensitive inward rectifier potassium channel 1 protein (178-391AA) |
| Formulation:          | Preservative: 0.03% Proclin 300<br>Constituents: 50% Glycerol, 0.01M PBS, PH 7.4         |
| Concentration:        | lot specific   |
| Purification:         | >95%, Protein G purified   |
| Conjugation:          | Unconjugated   |
| Storage:              | Upon receipt, store at -20°C or -80°C. Avoid repeated freeze.                            |
| Stability:            | 1 year from dispatch.  |
| Database Link:        | <a href="#">P48048</a>   |

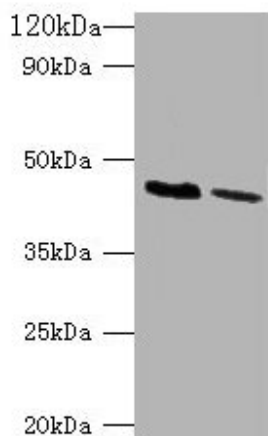


[View online »](#)

## Product images:



Immunofluorescent analysis of HeLa cells using TA387594 at dilution of 1:100 and Alexa Fluor 488-conjugated AffiniPure Goat Anti-Rabbit IgG(H+L)



Western blot  
All lanes: KCNJ1 antibody at 2 $\mu$ g/ml  
Lane 1: HepG2 whole cell lysate  
Lane 2: HeLa whole cell lysate  
Secondary  
Goat polyclonal to rabbit IgG at 1/10000 dilution  
Predicted band size: 45, 43 kDa  
Observed band size: 45 kDa