

Product datasheet for **TA387593**

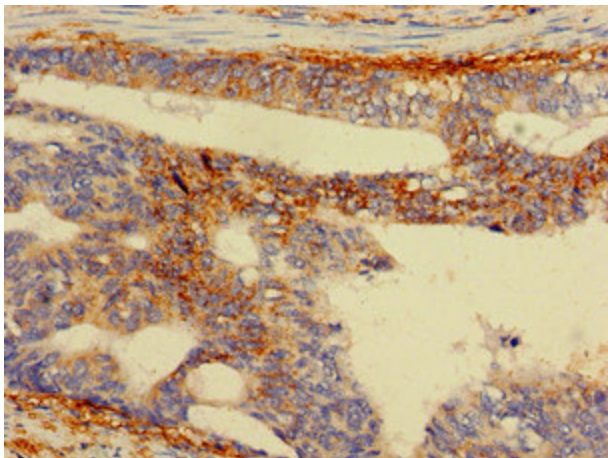
RPS5 Rabbit Polyclonal Antibody

Product data:

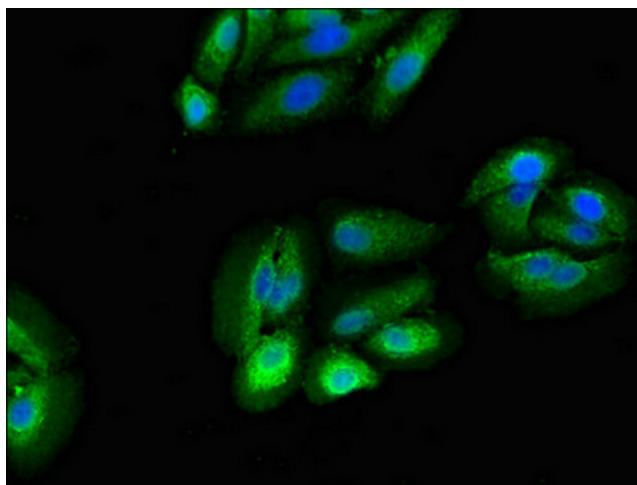
Product Type:	Primary Antibodies
Applications:	IF, IHC, WB
Recommended Dilution:	Recommended dilution: WB:1:500-1:5000, IHC:1:20-1:200, IF:1:50-1:200
Reactivity:	Mouse, Human
Host:	Rabbit
Isotype:	IgG
Clonality:	Polyclonal
Immunogen:	Recombinant Human 40S ribosomal protein S5 protein (1-204AA)
Formulation:	Preservative: 0.03% Proclin 300 Constituents: 50% Glycerol, 0.01M PBS, pH 7.4
Concentration:	lot specific
Purification:	>95%, Protein G purified
Conjugation:	Unconjugated
Storage:	Upon receipt, store at -20°C or -80°C. Avoid repeated freeze.
Stability:	1 year from dispatch.
Database Link:	P46782
Background:	cytosol, cytosolic small ribosomal subunit, extracellular exosome, extracellular matrix, focal adhesion, intracellular ribonucleoprotein complex, membrane, nucleoplasm, mRNA binding, poly(A) RNA binding



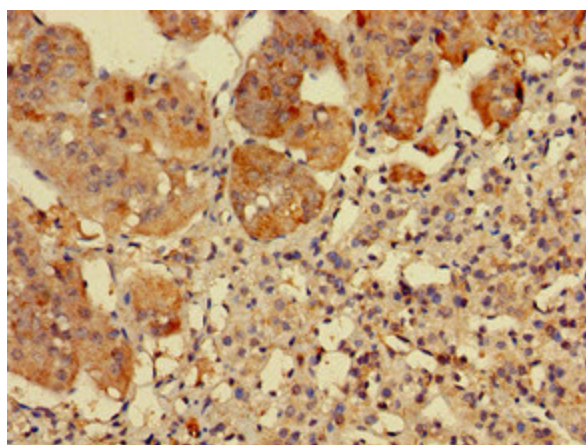
[View online »](#)

Product images:

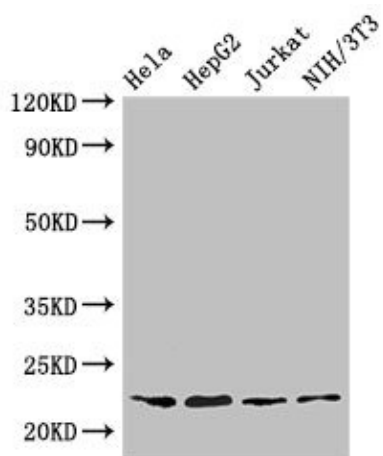
Immunohistochemistry of paraffin-embedded human colon cancer using TA387593 at dilution of 1:100



Immunofluorescent analysis of HepG2 cells using TA387593 at dilution of 1:100 and Alexa Fluor 488-conjugated AffiniPure Goat Anti-Rabbit IgG(H+L)



Immunohistochemistry of paraffin-embedded human adrenal gland tissue using TA387593 at dilution of 1:100



Western Blot
 Positive WB detected in: HeLa whole cell lysate, HepG2 whole cell lysate, Jurkat whole cell lysate, NIH/3T3 whole cell lysate
 All lanes: RPS5 antibody at 3.2µg/ml
 Secondary
 Goat polyclonal to rabbit IgG at 1/50000 dilution
 Predicted band size: 23 kDa
 Observed band size: 23 kDa