

Product datasheet for **TA387583M**

FKBP2 Rabbit Polyclonal Antibody

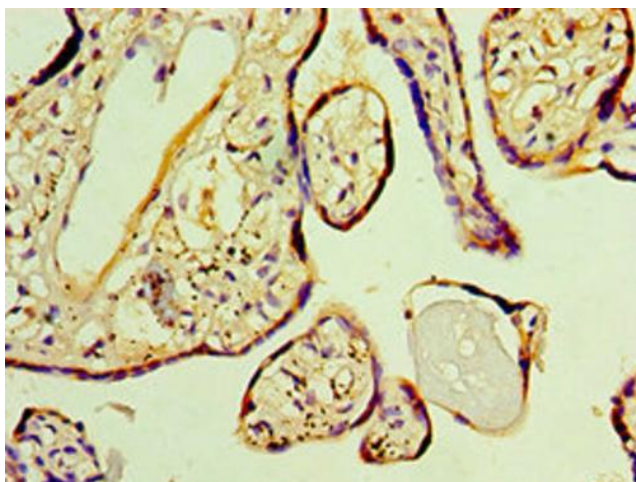
Product data:

Product Type:	Primary Antibodies
Applications:	IHC, WB
Recommended Dilution:	Recommended dilution: WB:1:200-1:1000, IHC:1:20-1:200
Reactivity:	Mouse, Rat, Human
Host:	Rabbit
Isotype:	IgG
Clonality:	Polyclonal
Immunogen:	Recombinant Human Peptidyl-prolyl cis-trans isomerase FKBP2 protein (22-142AA)
Formulation:	PBS with 0.02% sodium azide, 50% glycerol, pH7.3.
Concentration:	lot specific
Purification:	Antigen Affinity Purified
Conjugation:	Unconjugated
Storage:	Upon receipt, store at -20°C or -80°C. Avoid repeated freeze.
Stability:	1 year from dispatch.
Database Link:	P26885
Background:	PPLases accelerate the folding of proteins. It catalyzes the cis-trans isomerization of proline imidic peptide bonds in oligopeptides.

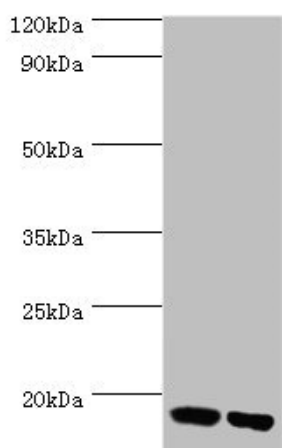


[View online »](#)

Product images:



Immunohistochemistry of paraffin-embedded human placenta tissue using [TA387583] at dilution of 1:100



Western blot
All lanes: Peptidyl-prolyl cis-trans isomerase
FKBP2 antibody at 10µg/ml
Lane 1: Mouse thymus tissue
Lane 2: Rat brain tissue
Secondary
Goat polyclonal to rabbit IgG at 1/10000 dilution
Predicted band size: 16 kDa
Observed band size: 16 kDa