

## Product datasheet for **TA387581M**

### ELAVL4 Rabbit Polyclonal Antibody

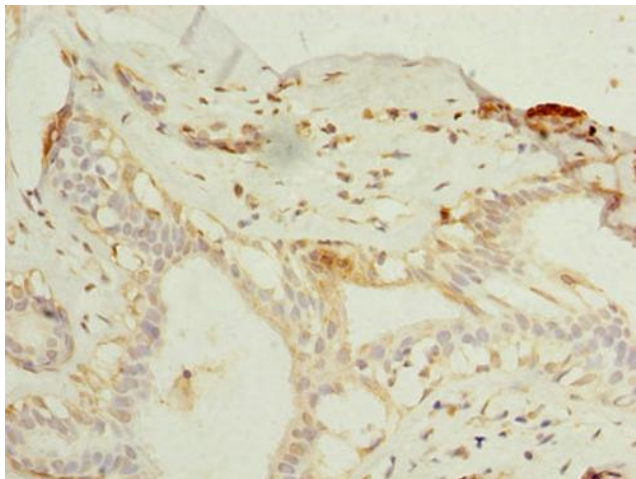
#### Product data:

|                       |  |
|-----------------------|--|
| Product Type:         | Primary Antibodies   |
| Applications:         | IF, IHC, WB  |
| Recommended Dilution: | Recommended dilution: WB:1:500-1:2000, IHC:1:20-1:200, IF:1:50-1:200   |
| Reactivity:           | Human  |
| Host:                 | Rabbit   |
| Isotype:              | IgG  |
| Clonality:            | Polyclonal   |
| Immunogen:            | Recombinant Human ELAV-like protein 4 protein (1-150AA)  |
| Formulation:          | Preservative: 0.03% Proclin 300<br>Constituents: 50% Glycerol, 0.01M PBS, PH 7.4   |
| Concentration:        | lot specific   |
| Purification:         | Antigen Affinity Purified  |
| Conjugation:          | Unconjugated   |
| Storage:              | Upon receipt, store at -20°C or -80°C. Avoid repeated freeze.  |
| Stability:            | 1 year from dispatch.  |
| Database Link:        | <a href="#">P26378</a>   |
| Background:           | May play a role in neuron-specific RNA processing. Protects CDKN1A mRNA from decay by binding to its 3'-UTR (By similarity). Binds to AU-rich sequences (AREs) of target mRNAs, including VEGF and FOS mRNA. |

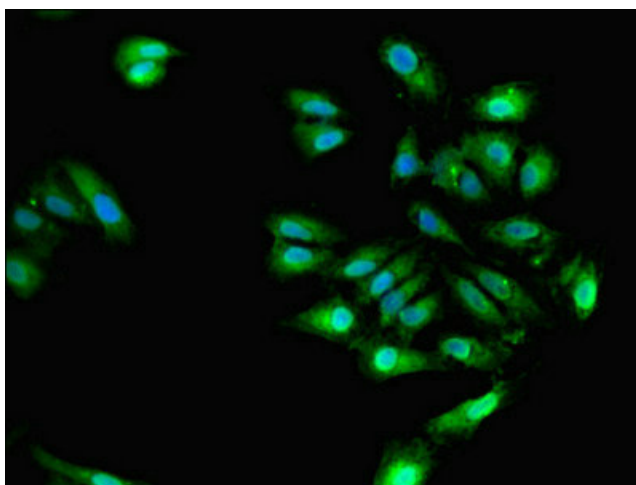


[View online »](#)

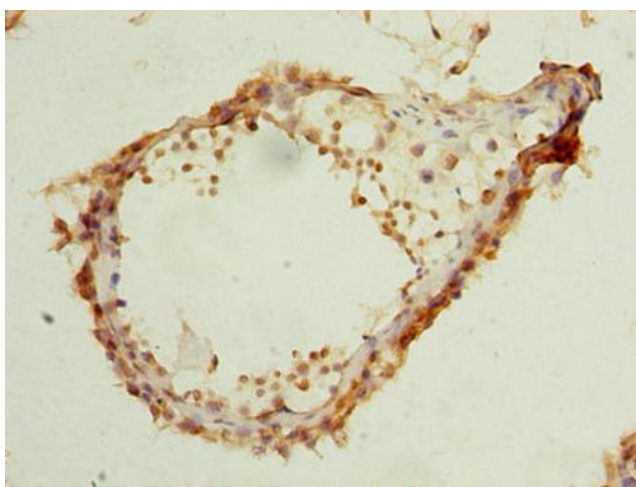
## Product images:



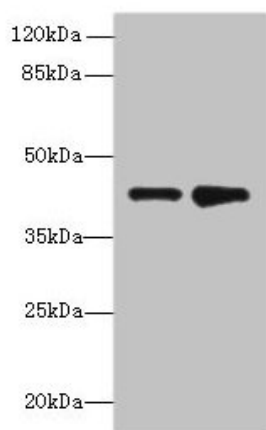
Immunohistochemistry of paraffin-embedded human breast cancer using [TA387581] at dilution of 1:100



Immunofluorescent analysis of Hela cells using [TA387581] at dilution of 1:100 and Alexa Fluor 488-conjugated AffiniPure Goat Anti-Rabbit IgG(H+L)



Immunohistochemistry of paraffin-embedded human testis tissue using [TA387581] at dilution of 1:100



Western blot  
All lanes: ELAVL4 antibody at 2 $\mu$ g/ml  
Lane 1: MCF-7 whole cell lysate  
Lane 2: 293T whole cell lysate  
Secondary  
Goat polyclonal to rabbit IgG at 1/10000 dilution  
Predicted band size: 42, 41, 43 kDa  
Observed band size: 42 kDa