

Product datasheet for **TA387581**

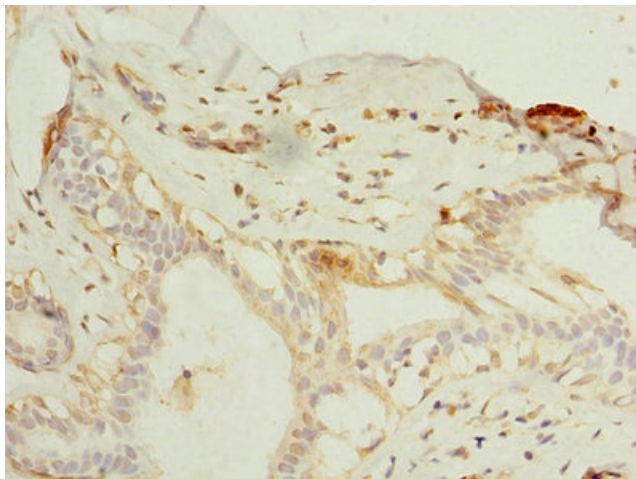
ELAVL4 Rabbit Polyclonal Antibody

Product data:

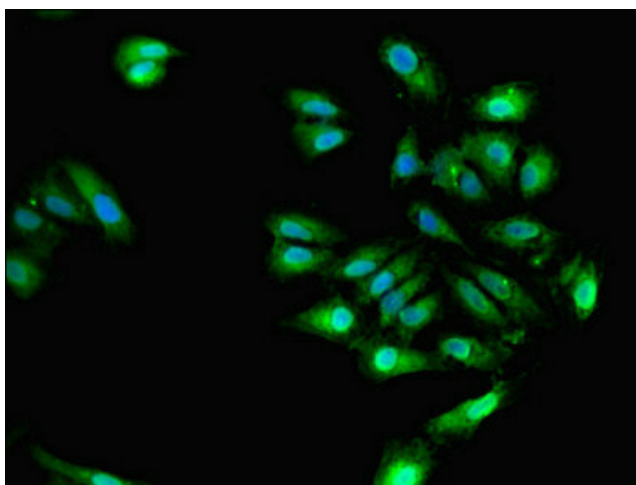
Product Type:	Primary Antibodies
Applications:	IF, IHC, WB
Recommended Dilution:	Recommended dilution: WB:1:500-1:2000, IHC:1:20-1:200, IF:1:50-1:200
Reactivity:	Human
Host:	Rabbit
Isotype:	IgG
Clonality:	Polyclonal
Immunogen:	Recombinant Human ELAV-like protein 4 protein (1-150AA)
Formulation:	Preservative: 0.03% Proclin 300 Constituents: 50% Glycerol, 0.01M PBS, PH 7.4
Concentration:	lot specific
Purification:	Antigen Affinity Purified
Conjugation:	Unconjugated
Storage:	Upon receipt, store at -20°C or -80°C. Avoid repeated freeze.
Stability:	1 year from dispatch.
Database Link:	P26378
Background:	May play a role in neuron-specific RNA processing. Protects CDKN1A mRNA from decay by binding to its 3'-UTR (By similarity). Binds to AU-rich sequences (AREs) of target mRNAs, including VEGF and FOS mRNA.



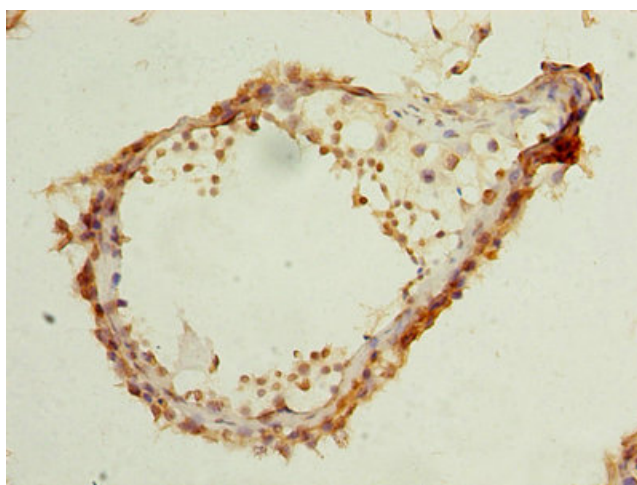
[View online »](#)

Product images:

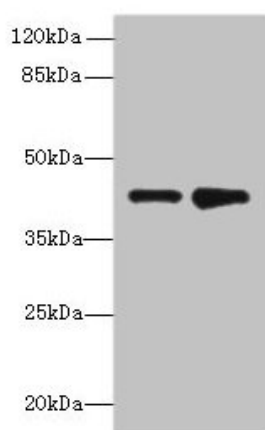
Immunohistochemistry of paraffin-embedded human breast cancer using TA387581 at dilution of 1:100



Immunofluorescent analysis of HeLa cells using TA387581 at dilution of 1:100 and Alexa Fluor 488-conjugated AffiniPure Goat Anti-Rabbit IgG(H+L)



Immunohistochemistry of paraffin-embedded human testis tissue using TA387581 at dilution of 1:100



Western blot
All lanes: ELAVL4 antibody at 2 μ g/ml
Lane 1: MCF-7 whole cell lysate
Lane 2: 293T whole cell lysate
Secondary
Goat polyclonal to rabbit IgG at 1/10000 dilution
Predicted band size: 42, 41, 43 kDa
Observed band size: 42 kDa