

Product datasheet for **TA387577**

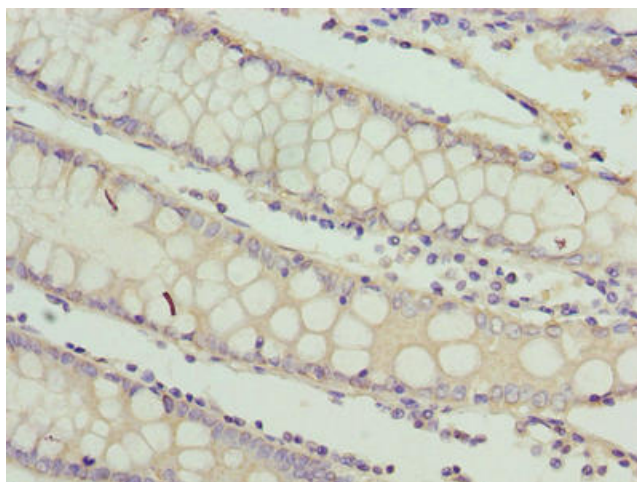
RAB3B Rabbit Polyclonal Antibody

Product data:

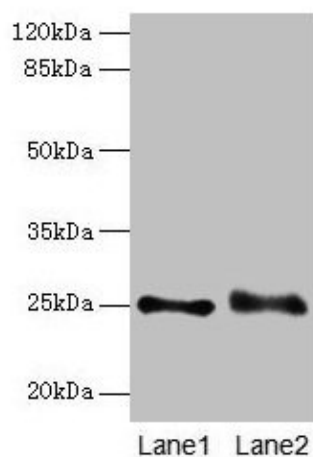
Product Type:	Primary Antibodies
Applications:	IHC, WB
Recommended Dilution:	Recommended dilution: WB:1:1000-1:5000, IHC:1:20-1:200
Reactivity:	Mouse, Human
Host:	Rabbit
Isotype:	IgG
Clonality:	Polyclonal
Immunogen:	Recombinant Human Ras-related protein Rab-3B protein (1-219AA)
Formulation:	Preservative: 0.03% Proclin 300 Constituents: 50% Glycerol, 0.01M PBS, PH 7.4
Concentration:	lot specific
Purification:	>95%, Protein G purified
Conjugation:	Unconjugated
Storage:	Upon receipt, store at -20°C or -80°C. Avoid repeated freeze.
Stability:	1 year from dispatch.
Database Link:	P20337
Background:	Protein transport. Probably involved in vesicular traffic.



[View online »](#)

Product images:

Immunohistochemistry of paraffin-embedded human colon cancer using TA387577 at dilution of 1:100



Western blot
All lanes: RAB3B antibody at 4 μ g/ml
Lane 1: Mouse brain tissue
Lane 2: U87 whole cell lysate
Secondary
Goat polyclonal to rabbit IgG at 1/10000 dilution
Predicted band size: 25 kDa
Observed band size: 25 kDa