

## Product datasheet for **TA387548**

### H2AC11 Rabbit Polyclonal Antibody

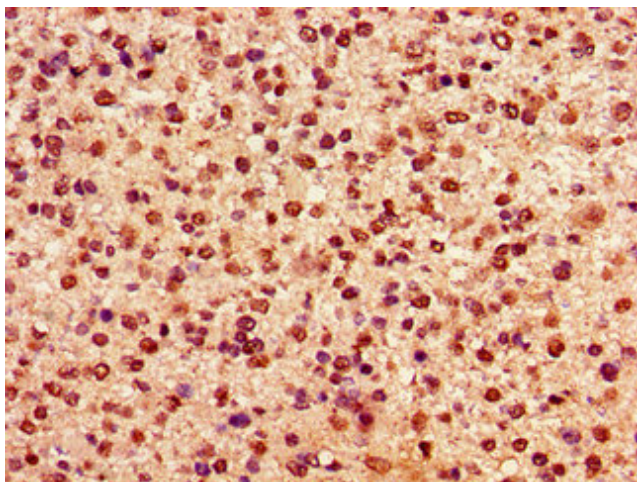
#### Product data:

Product Type:	Primary Antibodies
Applications:	ChIP, IF, IHC, WB
Recommended Dilution:	Recommended dilution: WB:1:200-1:2000, IHC:1:20-1:200, IF:1:50-1:200
Reactivity:	Human
Host:	Rabbit
Isotype:	IgG
Clonality:	Polyclonal
Immunogen:	Peptide sequence around site of Lys (36) derived from Human Histone H2A type 1
Formulation:	Preservative: 0.03% Proclin 300 Constituents: 50% Glycerol, 0.01M PBS, pH 7.4
Concentration:	lot specific
Purification:	Antigen Affinity Purified
Conjugation:	Unconjugated
Storage:	Upon receipt, store at -20°C or -80°C. Avoid repeated freeze.
Stability:	1 year from dispatch.
Database Link:	<a href="#">P0C0S8</a>
Background:	Core component of nucleosome. Nucleosomes wrap and compact DNA into chromatin, limiting DNA accessibility to the cellular machineries which require DNA as a template. Histones thereby play a central role in transcription regulation, DNA repair, DNA replication and chromosomal stability. DNA accessibility is regulated via a complex set of post-translational modifications of histones, also called histone code, and nucleosome remodeling.

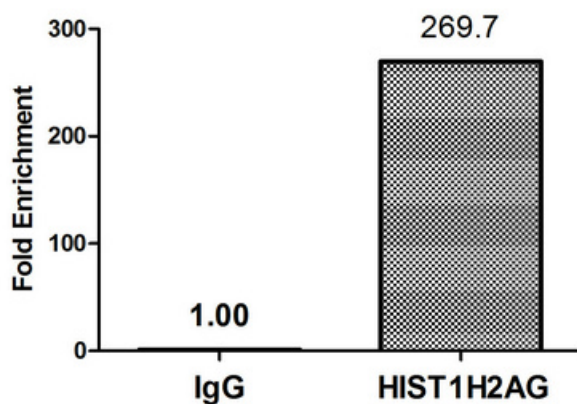


[View online »](#)

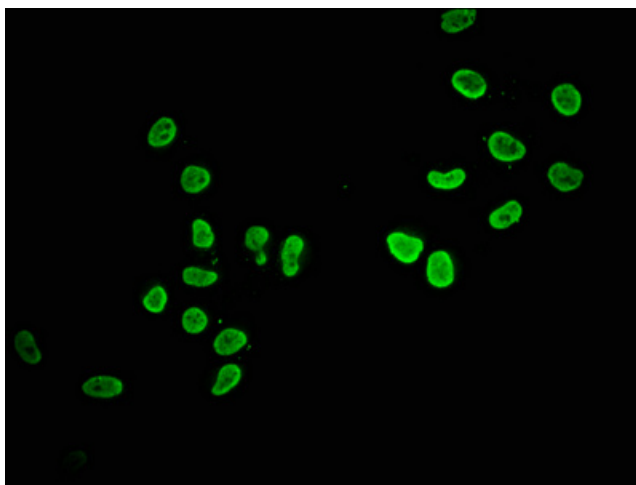
## Product images:



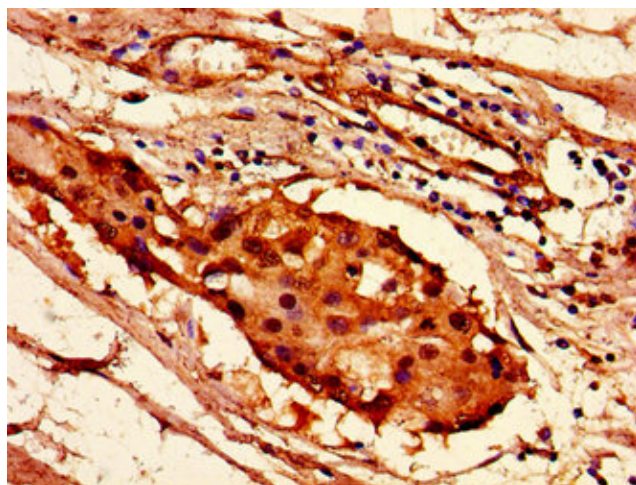
Immunohistochemistry of paraffin-embedded human glioma using TA387548 at dilution of 1:100



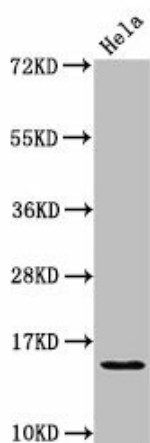
Chromatin Immunoprecipitation HeLa ( $4 \times 10^6$ ) were treated with Micrococcal Nuclease, sonicated, and immunoprecipitated with 8  $\mu$ g anti-HIST1H2AG (TA387548) or a control normal rabbit IgG. The resulting ChIP DNA was quantified using real-time PCR with primers against the  $\beta$ -Globin promoter.



Immunofluorescence staining of HeLa cells with TA387548 at 1:62, counter-stained with DAPI. The cells were fixed in 4% formaldehyde, permeabilized using 0.2% Triton X-100 and blocked in 10% normal Goat Serum. The cells were then incubated with the antibody overnight at 4°C. The secondary antibody was Alexa Fluor 488-conjugated AffiniPure Goat Anti-Rabbit IgG(H+L).



Immunohistochemistry of paraffin-embedded human breast cancer using TA387548 at dilution of 1:100



Western Blot  
 Positive WB detected in: HeLa whole cell lysate  
 All lanes: HIST1H2AG antibody at 1.25µg/ml  
 Secondary  
 Goat polyclonal to rabbit IgG at 1/50000 dilution  
 Predicted band size: 15 kDa  
 Observed band size: 15 kDa