

Product datasheet for **TA387546**

H2AC11 Rabbit Polyclonal Antibody

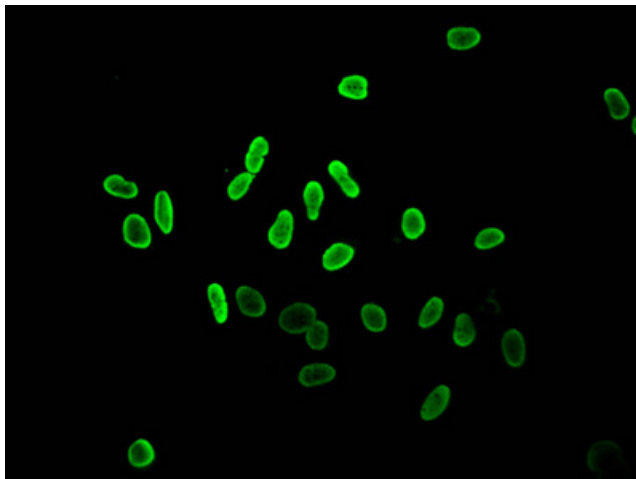
Product data:

Product Type:	Primary Antibodies
Applications:	ChIP, ICC, IF, WB
Recommended Dilution:	Recommended dilution: WB:1:200-1:2000, ICC:1:20-1:200, IF:1:50-1:200
Reactivity:	Human
Host:	Rabbit
Isotype:	IgG
Clonality:	Polyclonal
Immunogen:	Peptide sequence around site of Acetyl-Lys (36) derived from Human Histone H2A type 1
Formulation:	Preservative: 0.03% Proclin 300 Constituents: 50% Glycerol, 0.01M PBS, pH 7.4
Concentration:	lot specific
Purification:	Antigen Affinity Purified
Conjugation:	Unconjugated
Storage:	Upon receipt, store at -20°C or -80°C. Avoid repeated freeze.
Stability:	1 year from dispatch.
Database Link:	P0C0S8
Background:	Core component of nucleosome. Nucleosomes wrap and compact DNA into chromatin, limiting DNA accessibility to the cellular machineries which require DNA as a template. Histones thereby play a central role in transcription regulation, DNA repair, DNA replication and chromosomal stability. DNA accessibility is regulated via a complex set of post-translational modifications of histones, also called histone code, and nucleosome remodeling.

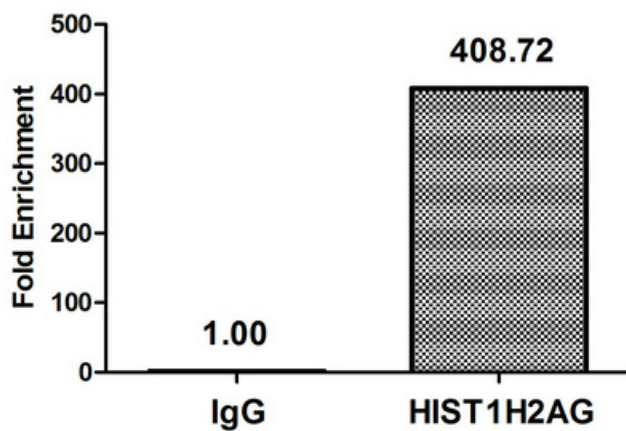


[View online »](#)

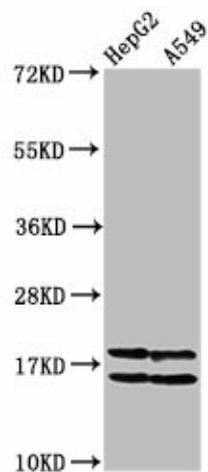
Product images:



Immunofluorescent analysis of HeLa cells (sodium butyrate, 30 mM, 4h) using TA387546 at dilution of 1:100 and Alexa Fluor 488-conjugated AffiniPure Goat Anti-Rabbit IgG(H+L)



Chromatin Immunoprecipitation HeLa (4×10^6 , treated with 30mM sodium butyrate for 4h) were treated with Micrococcal Nuclease, sonicated, and immunoprecipitated with 8 μ g anti-HIST1H2AG (TA387546) or a control normal rabbit IgG. The resulting ChIP DNA was quantified using real-time PCR with primers against the β -Globin promoter.



Western Blot

Positive WB detected in: HepG2 whole cell lysate, A549 whole cell lysate (All treated with 30mM sodium butyrate for 4h)

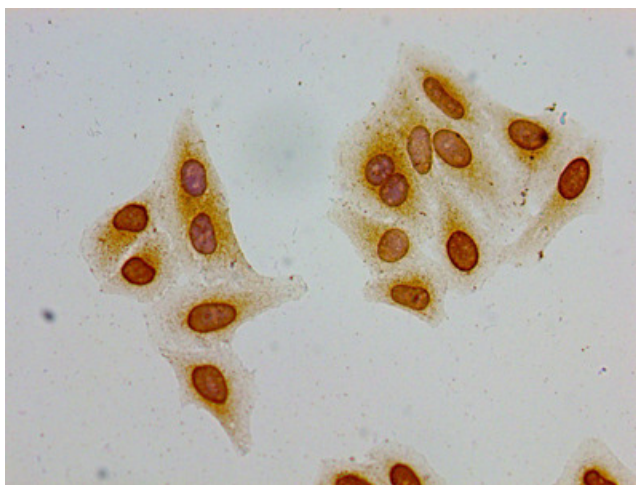
All lanes: HIST1H2AG antibody at 1 μ g/ml

Secondary

Goat polyclonal to rabbit IgG at 1/50000 dilution

Predicted band size: 15 kDa

Observed band size: 15 kDa



Immunocytochemistry analysis of HeLa cells using TA387546 at dilution of 1:100