

Product datasheet for **TA387541M**

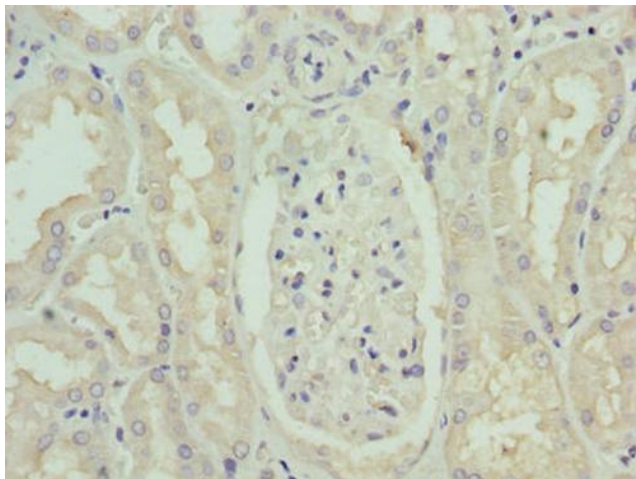
PAH Rabbit Polyclonal Antibody

Product data:

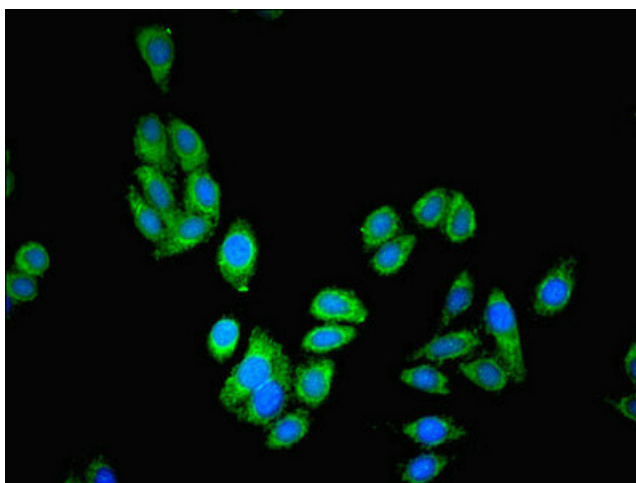
Product Type:	Primary Antibodies
Applications:	IF, IHC, WB
Recommended Dilution:	Recommended dilution: WB:1:1000-1:5000, IHC:1:20-1:200, IF:1:50-1:200
Reactivity:	Mouse, Human
Host:	Rabbit
Isotype:	IgG
Clonality:	Polyclonal
Immunogen:	Recombinant Human Phenylalanine-4-hydroxylase protein (2-452AA)
Formulation:	Preservative: 0.03% Proclin 300 Constituents: 50% Glycerol, 0.01M PBS, PH 7.4
Concentration:	lot specific
Purification:	>95%, Protein G purified
Conjugation:	Unconjugated
Storage:	Upon receipt, store at -20°C or -80°C. Avoid repeated freeze.
Stability:	1 year from dispatch.
Database Link:	P00439
Background:	cytosol, extracellular exosome, phenylalanine 4-monooxygenase activity, catecholamine biosynthetic process, cellular amino acid biosynthetic process, cellular nitrogen compound metabolic process, L-phenylalanine catabolic process, neurotransmitter biosynthetic process, small molecule metabolic process



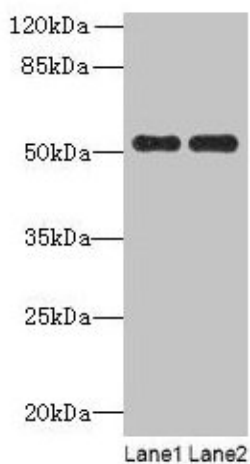
[View online »](#)

Product images:

Immunohistochemistry of paraffin-embedded human kidney tissue using [TA387541] at dilution of 1:100



Immunofluorescent analysis of HepG2 cells using [TA387541] at dilution of 1:100 and Alexa Fluor 488-conjugated AffiniPure Goat Anti-Rabbit IgG(H+L)



Western blot

All lanes: PAH antibody at 2.5 μ g/ml

Lane 1: Mouse kidney tissue

Lane 2: Mouse liver tissue

Secondary

Goat polyclonal to rabbit IgG at 1/10000 dilution

Predicted band size: 52 kDa

Observed band size: 52 kDa