

Product datasheet for **TA387539M**

ONECUT2 Rabbit Polyclonal Antibody

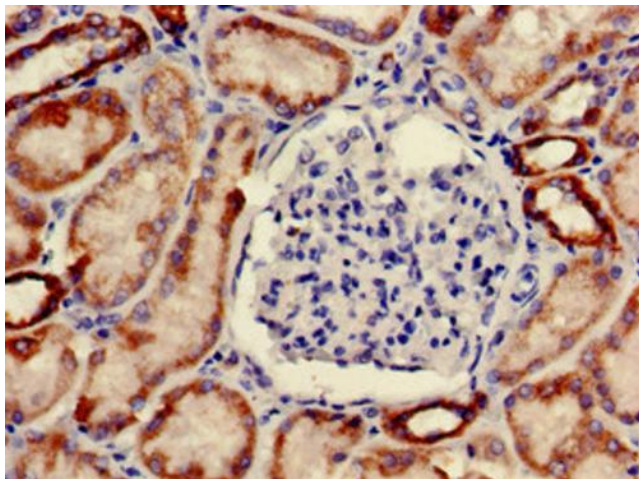
Product data:

Product Type:	Primary Antibodies
Applications:	IHC, WB
Recommended Dilution:	Recommended dilution: WB:1:500-1:5000, IHC:1:20-1:200
Reactivity:	Human
Host:	Rabbit
Isotype:	IgG
Clonality:	Polyclonal
Immunogen:	Recombinant Human One cut domain family member 2 protein (214-331AA)
Formulation:	Preservative: 0.03% Proclin 300 Constituents: 50% Glycerol, 0.01M PBS, pH 7.4
Concentration:	lot specific
Purification:	>95%, Protein G purified
Conjugation:	Unconjugated
Storage:	Upon receipt, store at -20°C or -80°C. Avoid repeated freeze.
Stability:	1 year from dispatch.
Database Link:	Q95948
Background:	Transcriptional activator. Activates the transcription of a number of liver genes such as HNF3B.

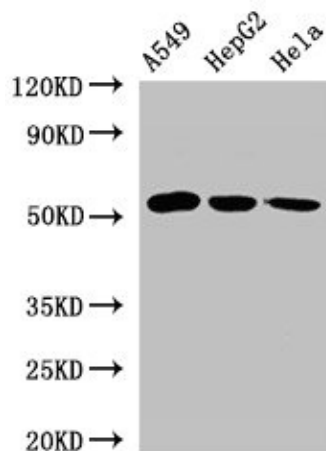


[View online »](#)

Product images:



Immunohistochemistry of paraffin-embedded human kidney tissue using [TA387539] at dilution of 1:100



Western Blot

Positive WB detected in: A549 whole cell lysate, HepG2 whole cell lysate, HeLa whole cell lysate
All lanes: ONECUT2 antibody at 2.4µg/ml
Secondary

Goat polyclonal to rabbit IgG at 1/50000 dilution
Predicted band size: 55 kDa
Observed band size: 55 kDa