

## Product datasheet for **TA387535**

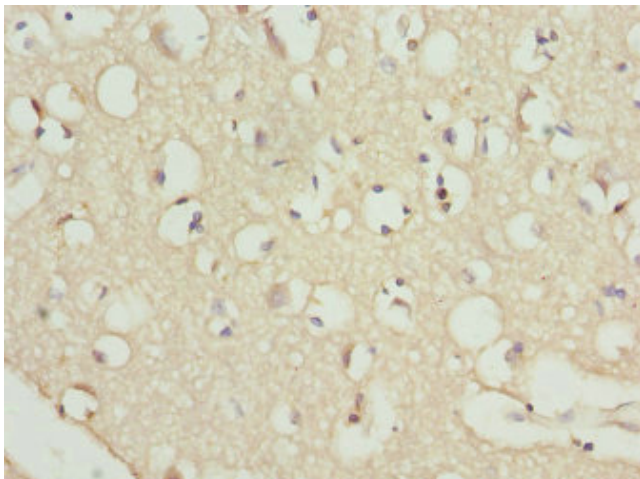
### RFPL2 Rabbit Polyclonal Antibody

#### Product data:

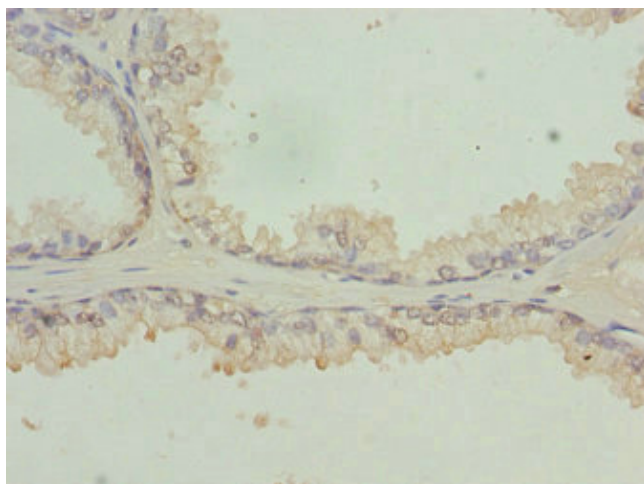
Product Type:	Primary Antibodies
Applications:	IHC, WB
Recommended Dilution:	Recommended dilution: WB:1:1000-1:5000, IHC:1:20-1:200
Reactivity:	Human
Host:	Rabbit
Isotype:	IgG
Clonality:	Polyclonal
Immunogen:	Recombinant Human Ret finger protein-like 2 protein (99-378AA)
Formulation:	PBS with 0.02% sodium azide, 50% glycerol, pH7.3.
Concentration:	lot specific
Purification:	Antigen Affinity Purified
Conjugation:	Unconjugated
Storage:	Upon receipt, store at -20°C or -80°C. Avoid repeated freeze.
Stability:	1 year from dispatch.
Database Link:	<a href="#">O75678</a>



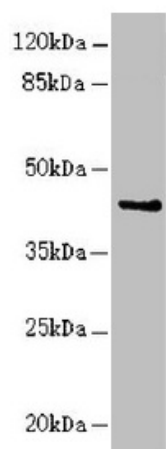
[View online »](#)

**Product images:**

Immunohistochemistry of paraffin-embedded human brain tissue using TA387535 at dilution of 1:100



Immunohistochemistry of paraffin-embedded human prostate cancer using TA387535 at dilution of 1:100



Western blot

All lanes: RFPL2 antibody at 3.41 $\mu$ g/ml + MCF-7 whole cell lysate

Secondary

Goat polyclonal to rabbit IgG at 1/10000 dilution

Predicted band size: 43, 33, 36 kDa

Observed band size: 43 kDa