

## Product datasheet for **TA387529**

### LDB3 Rabbit Polyclonal Antibody

#### Product data:

Product Type:	Primary Antibodies
Applications:	IHC, WB
Recommended Dilution:	Recommended dilution: WB:1:1000-1:5000, IHC:1:20-1:200
Reactivity:	Human
Host:	Rabbit
Isotype:	IgG
Clonality:	Polyclonal
Immunogen:	Recombinant Human LIM domain-binding protein 3 protein (1-283AA)
Formulation:	PBS with 0.02% sodium azide, 50% glycerol, pH7.3.
Concentration:	lot specific
Purification:	Antigen Affinity Purified
Conjugation:	Unconjugated
Storage:	Upon receipt, store at -20°C or -80°C. Avoid repeated freeze.
Stability:	1 year from dispatch.
Database Link:	<a href="#">O75112</a>
Background:	May function as an adapter in striated muscle to couple protein kinase C-mediated signaling via its LIM domains to the cytoskeleton.

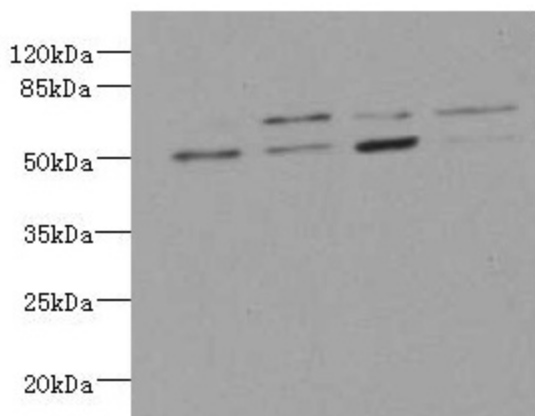


[View online »](#)

Product images:



Immunohistochemistry of paraffin-embedded human skeletal muscle tissue using TA387529 at dilution of 1:100



Western blot  
 All lanes: LDB3 antibody at 3.21ug/ml  
 Lane 1 : Hela whole cell lysate  
 Lane 2 : Raji whole cell lysate  
 Lane 3 : MCF-7 whole cell lysate  
 Lane 4 : A431 whole cell lysate  
 Secondary  
 Goat polyclonal to rabbit IgG at 1/10000 dilution  
 Predicted band size: 78, 67, 51, 43, 36, 31, 79 kDa  
 Observed band size: 67, 51 kDa