

## Product datasheet for **TA387527M**

### **EFCAB14 Rabbit Polyclonal Antibody**

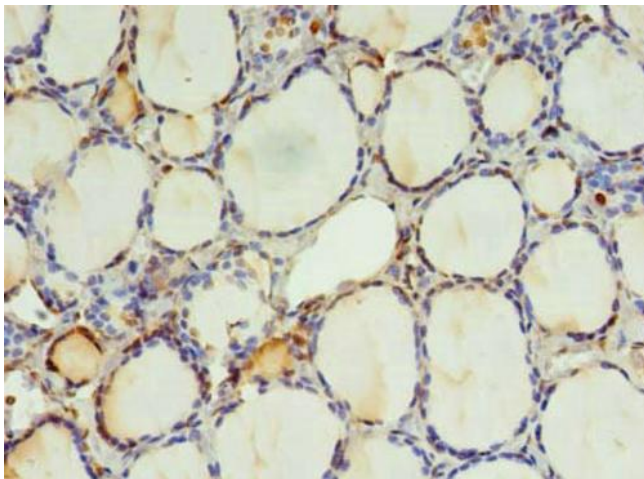
#### **Product data:**

Product Type:	Primary Antibodies
Applications:	IHC, WB
Recommended Dilution:	Recommended dilution: WB:1:500-1:2000, IHC:1:20-1:200
Reactivity:	Human
Host:	Rabbit
Isotype:	IgG
Clonality:	Polyclonal
Immunogen:	Recombinant Human EF-hand calcium-binding domain-containing protein 14 protein (1-483AA)
Formulation:	Preservative: 0.03% Proclin 300 Constituents: 50% Glycerol, 0.01M PBS, PH 7.4
Concentration:	lot specific
Purification:	>95%, Protein G purified
Conjugation:	Unconjugated
Storage:	Upon receipt, store at -20°C or -80°C. Avoid repeated freeze.
Stability:	1 year from dispatch.
Database Link:	<u><a href="#">O75071</a></u>

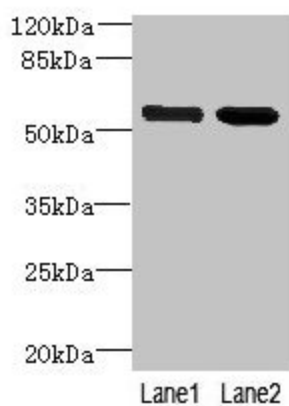


[View online »](#)

## Product images:



Immunohistochemistry of paraffin-embedded human thyroid tissue using [TA387527] at dilution of 1:100



Western blot  
All lanes: EFCAB14 antibody at 4 $\mu$ g/ml  
Lane 1: Colo320 whole cell lysate  
Lane 2: Hela whole cell lysate  
Secondary  
Goat polyclonal to rabbit IgG at 1/10000 dilution  
Predicted band size: 56 kDa  
Observed band size: 56 kDa