

Product datasheet for **TA387521**

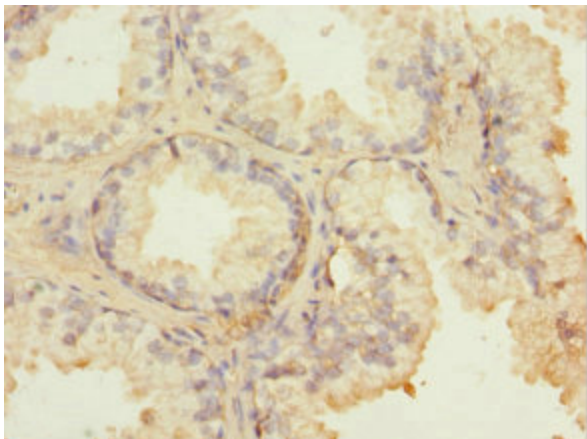
FIBP Rabbit Polyclonal Antibody

Product data:

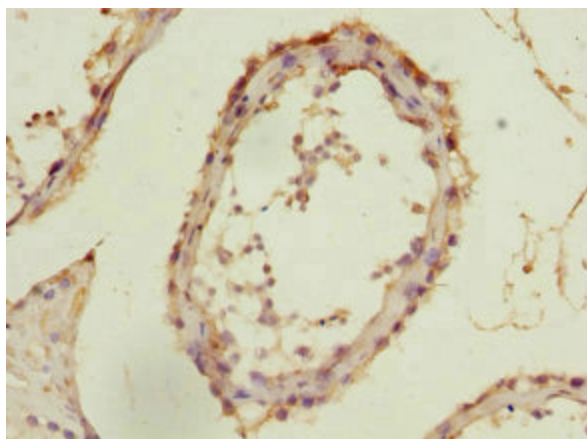
Product Type:	Primary Antibodies
Applications:	IHC, WB
Recommended Dilution:	Recommended dilution: WB:1:1000-1:5000, IHC:1:20-1:200
Reactivity:	Mouse, Rat, Human
Host:	Rabbit
Isotype:	IgG
Clonality:	Polyclonal
Immunogen:	Recombinant Human Acidic fibroblast growth factor intracellular-binding protein (1-364AA)
Formulation:	PBS with 0.02% sodium azide, 50% glycerol, pH7.3.
Concentration:	lot specific
Purification:	Antigen Affinity Purified
Conjugation:	Unconjugated
Storage:	Upon receipt, store at -20°C or -80°C. Avoid repeated freeze.
Stability:	1 year from dispatch.
Database Link:	O43427
Background:	May be involved in mitogenic function of FGF1. May mediate with IER2 FGF-signaling in the establishment of laterality in the embryo (By similarity).



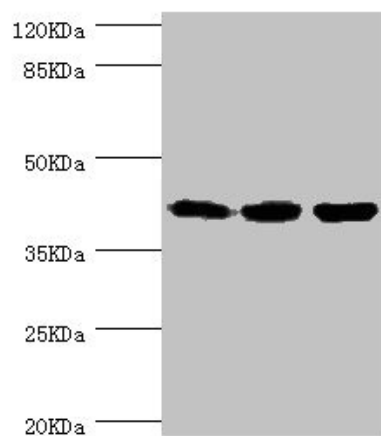
[View online »](#)

Product images:

Immunohistochemistry of paraffin-embedded human prostate cancer using TA387521 at dilution of 1:100



Immunohistochemistry of paraffin-embedded human testis tissue using TA387521 at dilution of 1:100



Western blot

All lanes: FIBP antibody at 1.84 μ g/ml

Lane 1: Rat gonad tissue

Lane 2: MCF-7 whole cell lysate

Lane 3: Mouse skeletal muscle tissue

Secondary

Goat polyclonal to rabbit IgG at 1/10000 dilution

Predicted band size: 42 kDa

Observed band size: 42 kDa