

## Product datasheet for **TA387496**

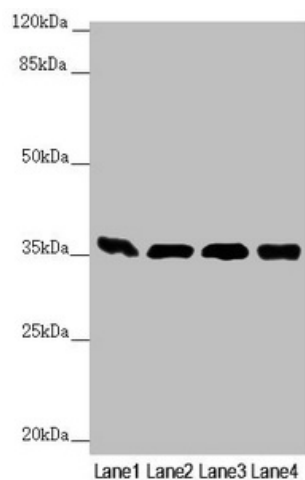
### GNB2 Rabbit Polyclonal Antibody

#### Product data:

Product Type:	Primary Antibodies
Applications:	WB
Recommended Dilution:	Recommended dilution: WB:1:1000-1:5000
Reactivity:	Mouse, Human
Host:	Rabbit
Isotype:	IgG
Clonality:	Polyclonal
Immunogen:	Recombinant Human Guanine nucleotide-binding protein G(I)/G(S)/G(T) subunit beta-2 protein (1-340AA)
Formulation:	PBS with 0.02% sodium azide, 50% glycerol, pH7.3.
Concentration:	lot specific
Purification:	Antigen Affinity Purified
Conjugation:	Unconjugated
Storage:	Upon receipt, store at -20°C or -80°C. Avoid repeated freeze.
Stability:	1 year from dispatch.
Database Link:	<a href="#">P62879</a>
Background:	Guanine nucleotide-binding proteins (G proteins) are involved as a modulator or transducer in various transmembrane signaling systems. The beta and gamma chains are required for the GTPase activity, for replacement of GDP by GTP, and for G protein-effector interaction.



[View online »](#)

**Product images:**

## Western blot

All lanes: GNB2 antibody at 1.87  $\mu\text{g/ml}$

Lane 1: Mouse liver tissue

Lane 2: Mouse lung tissue

Lane 3: NIH/3T3 whole cell lysate

Lane 4: Jurkat whole cell lysate

Secondary

Goat polyclonal to rabbit IgG at 1/10000 dilution

Predicted band size: 38, 26 kDa

Observed band size: 38 kDa