

## Product datasheet for **TA387495**

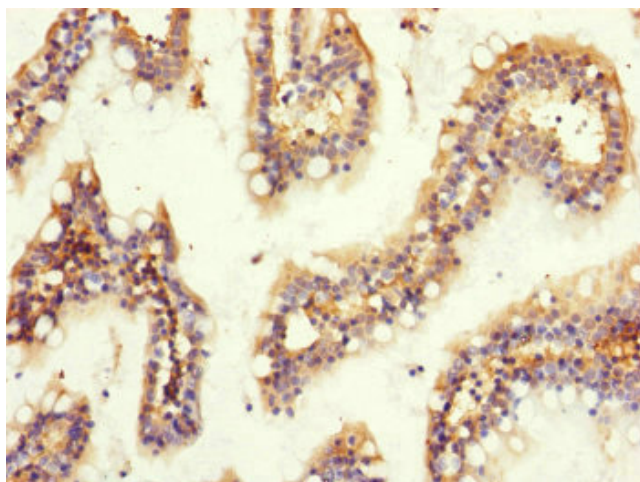
### GNB2 Rabbit Polyclonal Antibody

#### Product data:

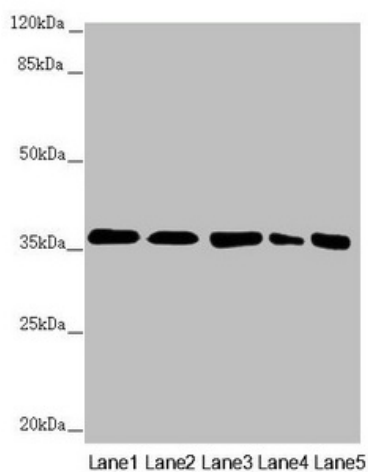
Product Type:	Primary Antibodies
Applications:	IHC, WB
Recommended Dilution:	Recommended dilution: WB:1:1000-1:5000, IHC:1:20-1:200
Reactivity:	Mouse, Human
Host:	Rabbit
Isotype:	IgG
Clonality:	Polyclonal
Immunogen:	Recombinant Human Guanine nucleotide-binding protein G(I)/G(S)/G(T) subunit beta-2 protein (1-340AA)
Formulation:	PBS with 0.02% sodium azide, 50% glycerol, pH7.3.
Concentration:	lot specific
Purification:	Antigen Affinity Purified
Conjugation:	Unconjugated
Storage:	Upon receipt, store at -20°C or -80°C. Avoid repeated freeze.
Stability:	1 year from dispatch.
Database Link:	<a href="#">P62879</a>
Background:	Guanine nucleotide-binding proteins (G proteins) are involved as a modulator or transducer in various transmembrane signaling systems. The beta and gamma chains are required for the GTPase activity, for replacement of GDP by GTP, and for G protein-effector interaction.



[View online »](#)

**Product images:**

Immunohistochemistry of paraffin-embedded human small intestine tissue using TA387495 at dilution of 1:100



Western blot  
All lanes: GNB2 antibody at 2.22 $\mu$ g/ml  
Lane 1: Mouse lung tissue  
Lane 2: NIH/3T3 whole cell lysate  
Lane 3: Jurkat whole cell lysate  
Lane 4: 293T whole cell lysate  
Lane 5: Hela whole cell lysate  
Secondary  
Goat polyclonal to rabbit IgG at 1/10000 dilution  
Predicted band size: 38, 26 kDa  
Observed band size: 38 kDa