

Product datasheet for **TA387493M**

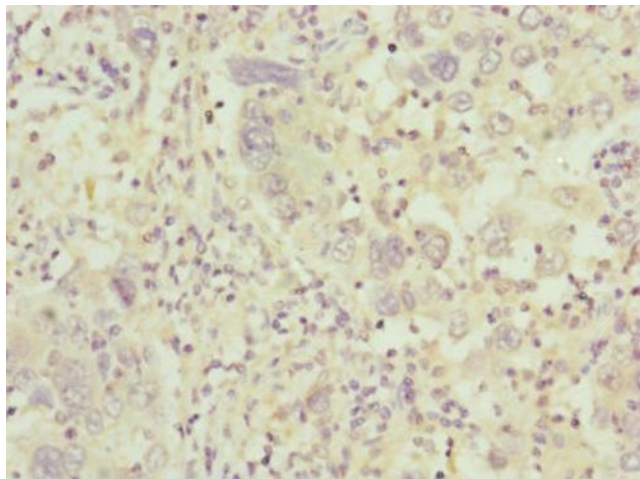
C8B Rabbit Polyclonal Antibody

Product data:

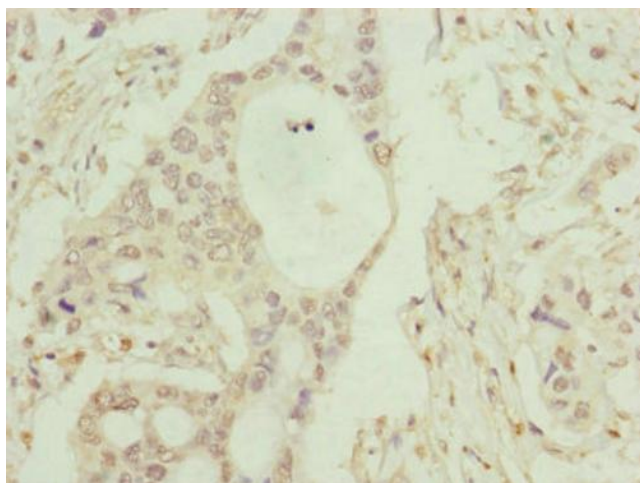
Product Type:	Primary Antibodies
Applications:	IHC, WB
Recommended Dilution:	Recommended dilution: WB:1:1000-1:5000, IHC:1:20-1:200
Reactivity:	Mouse, Human
Host:	Rabbit
Isotype:	IgG
Clonality:	Polyclonal
Immunogen:	Recombinant Human Complement component C8 beta chain protein (55-350AA)
Formulation:	PBS with 0.02% sodium azide, 50% glycerol, pH7.3.
Concentration:	lot specific
Purification:	Antigen Affinity Purified
Conjugation:	Unconjugated
Storage:	Upon receipt, store at -20°C or -80°C. Avoid repeated freeze.
Stability:	1 year from dispatch.
Database Link:	P07358
Background:	Constituent of the membrane attack complex (MAC) that plays a key role in the innate and adaptive immune response by forming pores in the plasma membrane of target cells.



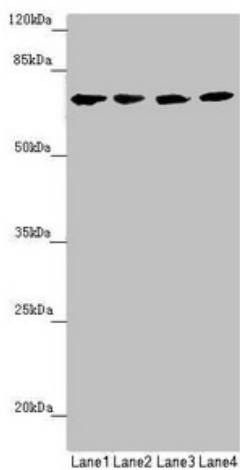
[View online »](#)

Product images:

Immunohistochemistry of paraffin-embedded human liver cancer using [TA387493] at dilution of 1:100



Immunohistochemistry of paraffin-embedded human pancreatic cancer using [TA387493] at dilution of 1:100



Western blot

All lanes: C8B antibody at 1.28 μ g/ml

Lane 1: Hela whole cell lysate

Lane 2: Jurkat whole cell lysate

Lane 3: Raji whole cell lysate

Lane 4: Mouse liver tissue

Secondary

Goat polyclonal to rabbit IgG at 1/10000 dilution

Predicted band size: 67 kDa

Observed band size: 67 kDa