

Product datasheet for **TA387489M**

LRRTM4 Rabbit Polyclonal Antibody

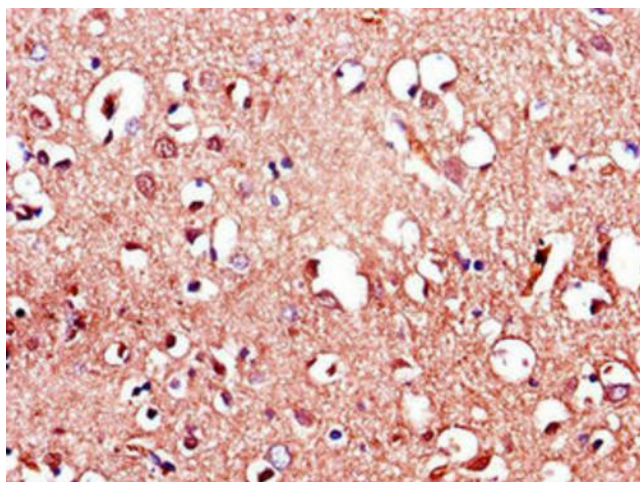
Product data:

Product Type:	Primary Antibodies
Applications:	IF, IHC, WB
Recommended Dilution:	Recommended dilution: WB:1:1000-1:5000, IHC:1:20-1:200, IF:1:50-1:200
Reactivity:	Mouse, Human
Host:	Rabbit
Isotype:	IgG
Clonality:	Polyclonal
Immunogen:	Recombinant Human Leucine-rich repeat transmembrane neuronal protein 4 protein (259-419AA)
Formulation:	Preservative: 0.03% Proclin 300 Constituents: 50% Glycerol, 0.01M PBS, PH 7.4
Concentration:	lot specific
Purification:	>95%, Protein G purified
Conjugation:	Unconjugated
Storage:	Upon receipt, store at -20°C or -80°C. Avoid repeated freeze.
Stability:	1 year from dispatch.
Database Link:	Q86VH4
Background:	May play a role in the development and maintenance of the vertebrate nervous system. Exhibits strong synaptogenic activity, restricted to excitatory presynaptic differentiation (By similarity).

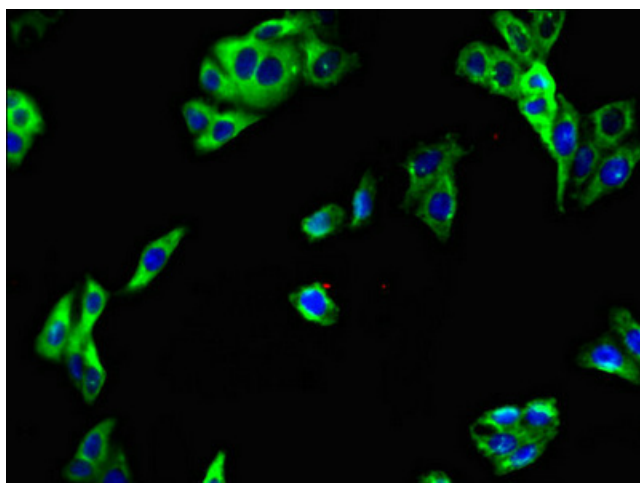


[View online »](#)

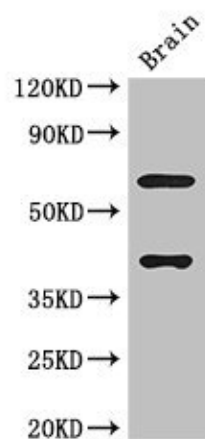
Product images:



Immunohistochemistry of paraffin-embedded human brain tissue using [TA387489] at dilution of 1:100



Immunofluorescent analysis of HepG2 cells using [TA387489] at dilution of 1:100 and Alexa Fluor 488-conjugated AffiniPure Goat Anti-Rabbit IgG(H+L)



Western Blot

Positive WB detected in: Mouse brain tissue

All lanes: LRRTM4 antibody at 3µg/ml

Secondary

Goat polyclonal to rabbit IgG at 1/50000 dilution

Predicted band size: 68, 60 kDa

Observed band size: 68, 40 kDa