

Product datasheet for **TA387487**

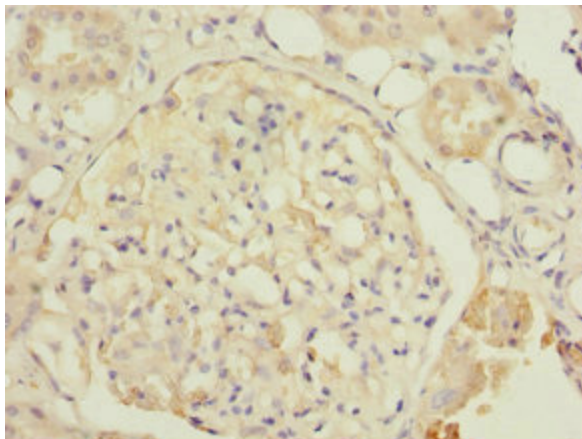
DPYS Rabbit Polyclonal Antibody

Product data:

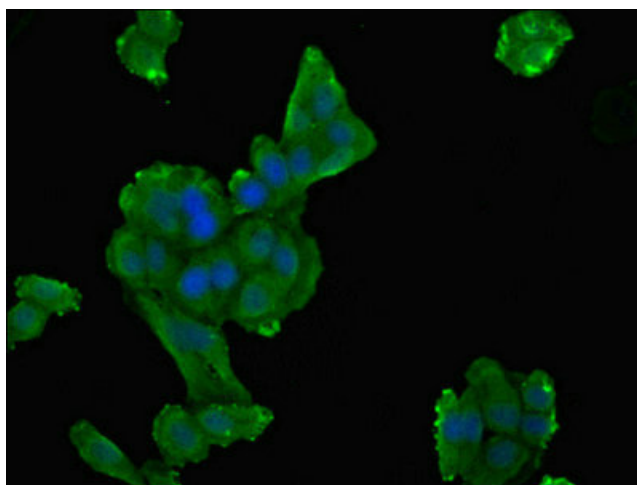
| | |
|-----------------------|--|
| Product Type: | Primary Antibodies |
| Applications: | IF, IHC, WB |
| Recommended Dilution: | Recommended dilution: WB:1:500-1:2000, IHC:1:20-1:200, IF:1:50-1:200 |
| Reactivity: | Mouse, Human |
| Host: | Rabbit |
| Isotype: | IgG |
| Clonality: | Polyclonal |
| Immunogen: | Recombinant Human Dihydropyrimidinase protein (250-519AA) |
| Formulation: | PBS with 0.02% sodium azide, 50% glycerol, pH7.3. |
| Concentration: | lot specific |
| Purification: | Antigen Affinity Purified |
| Conjugation: | Unconjugated |
| Storage: | Upon receipt, store at -20°C or -80°C. Avoid repeated freeze. |
| Stability: | 1 year from dispatch. |
| Database Link: | Q14117 |
| Background: | Catalyzes the second step of the reductive pyrimidine degradation, the reversible hydrolytic ring opening of dihydropyrimidines. Can catalyze the ring opening of 5,6-dihydrouracil to N-carbamyl-alanine and of 5,6-dihydrothymine to N-carbamyl-amino isobutyrate. |



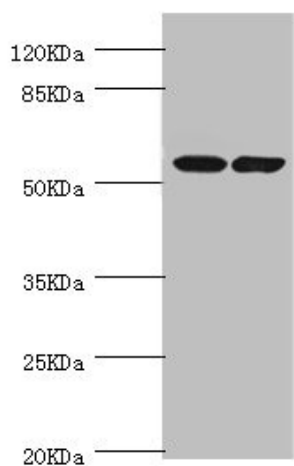
[View online »](#)

Product images:

Immunohistochemistry of paraffin-embedded human kidney tissue using TA387487 at dilution of 1:100



Immunofluorescent analysis of HepG2 cells using TA387487 at dilution of 1:100 and Alexa Fluor 488-conjugated AffiniPure Goat Anti-Rabbit IgG(H+L)



Western blot

All lanes: DPYS antibody at 1.1 μ g/ml

Lane 1: Mouse liver tissue

Lane 2: Mouse kidney tissue

Secondary

Goat polyclonal to rabbit IgG at 1/10000 dilution

Predicted band size: 57 kDa

Observed band size: 57 kDa