

## Product datasheet for **TA387485M**

### CDK16 Rabbit Polyclonal Antibody

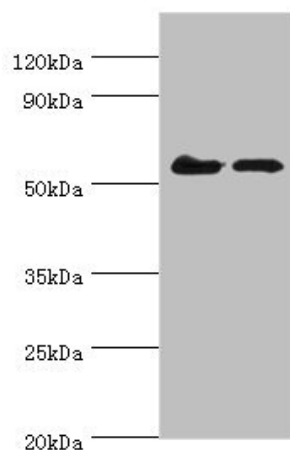
#### Product data:

Product Type:	Primary Antibodies
Applications:	WB
Recommended Dilution:	Recommended dilution: WB:1:200-1:1000
Reactivity:	Mouse, Human
Host:	Rabbit
Isotype:	IgG
Clonality:	Polyclonal
Immunogen:	Recombinant Human Cyclin-dependent kinase 16 protein (277-496AA)
Formulation:	PBS with 0.02% sodium azide, 50% glycerol, pH7.3.
Concentration:	lot specific
Purification:	Antigen Affinity Purified
Conjugation:	Unconjugated
Storage:	Upon receipt, store at -20°C or -80°C. Avoid repeated freeze.
Stability:	1 year from dispatch.
Database Link:	<a href="#">Q00536</a>
Background:	Protein kinase that plays a role in vesicle-mediated transport processes and exocytosis. Regulates GH1 release by brain neurons. Phosphorylates NSF, and thereby regulates NSF oligomerization. Required for normal spermatogenesis. Regulates neuron differentiation and dendrite development (By similarity). Plays a role in the regulation of insulin secretion in response to changes in blood glucose levels. Can phosphorylate CCNY at 'Ser-336' (in vitro).



[View online »](#)

## Product images:



Western blot

All lanes: CDK16 antibody at 5 $\mu$ g/ml

Lane 1: Mouse brain tissue

Lane 2: Mouse small intestineSecondary

Goat polyclonal to rabbit IgG at 1/10000 dilution

Predicted band size: 56, 64, 57 kDa

Observed band size: 56 kDa