

## Product datasheet for **TA387484**

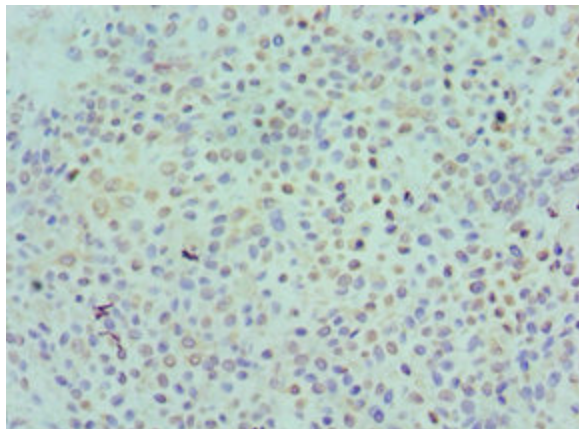
### **KIR2DS4 Rabbit Polyclonal Antibody**

#### **Product data:**

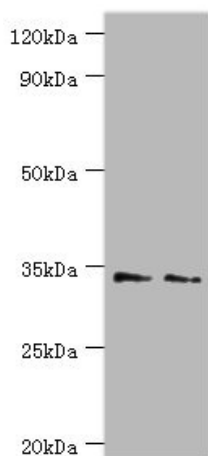
<b>Product Type:</b>	Primary Antibodies
<b>Applications:</b>	IHC, WB
<b>Recommended Dilution:</b>	Recommended dilution: WB:1:200-1:1000, IHC:1:20-1:200
<b>Reactivity:</b>	Human
<b>Host:</b>	Rabbit
<b>Isotype:</b>	IgG
<b>Clonality:</b>	Polyclonal
<b>Immunogen:</b>	Recombinant Human Killer cell immunoglobulin-like receptor 2DS4 protein (22-245AA)
<b>Formulation:</b>	PBS with 0.02% sodium azide, 50% glycerol, pH7.3.
<b>Concentration:</b>	lot specific
<b>Purification:</b>	Antigen Affinity Purified
<b>Conjugation:</b>	Unconjugated
<b>Storage:</b>	Upon receipt, store at -20°C or -80°C. Avoid repeated freeze.
<b>Stability:</b>	1 year from dispatch.
<b>Database Link:</b>	<a href="#">P43632</a>
<b>Background:</b>	Receptor on natural killer (NK) cells for HLA-C alleles. Does not inhibit the activity of NK cells.



[View online »](#)

**Product images:**

Immunohistochemistry of paraffin-embedded human breast cancer using TA387484 at dilution of 1:100



Western blot  
All lanes: Killer cell immunoglobulin-like receptor 2DS4 antibody at 4 $\mu$ g/ml  
Lane 1: K562 whole cell lysate  
Lane 2: Jurkat whole cell lysate  
Secondary  
Goat polyclonal to rabbit IgG at 1/10000 dilution  
Predicted band size: 34 kDa  
Observed band size: 34 kDa