

## Product datasheet for **TA387483M**

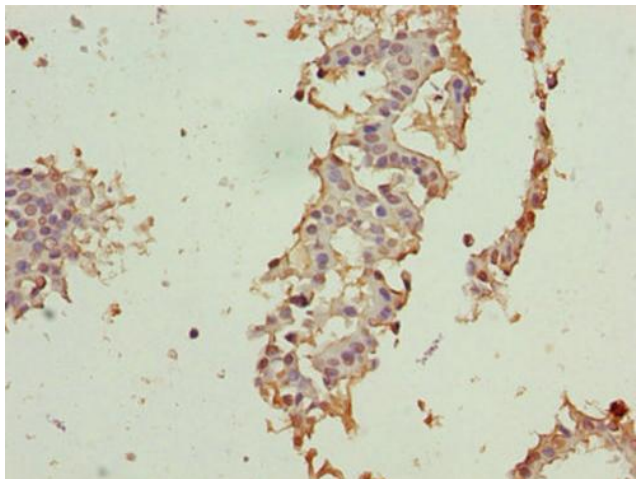
### CRABP1 Rabbit Polyclonal Antibody

#### Product data:

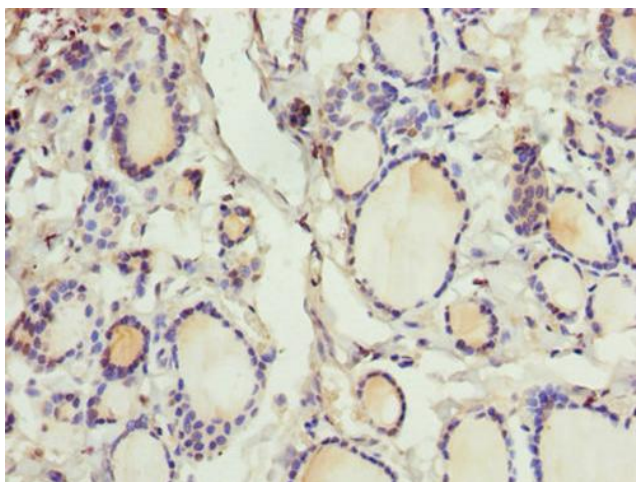
Product Type:	Primary Antibodies
Applications:	IHC, WB
Recommended Dilution:	Recommended dilution: WB:1:500-1:2000, IHC:1:20-1:200
Reactivity:	Mouse, Human
Host:	Rabbit
Isotype:	IgG
Clonality:	Polyclonal
Immunogen:	Recombinant Human Cellular retinoic acid-binding protein 1 protein (2-137AA)
Formulation:	Preservative: 0.03% Proclin 300 Constituents: 50% Glycerol, 0.01M PBS, PH 7.4
Concentration:	lot specific
Purification:	>95%, Protein G purified
Conjugation:	Unconjugated
Storage:	Upon receipt, store at -20°C or -80°C. Avoid repeated freeze.
Stability:	1 year from dispatch.
Database Link:	<a href="#">P29762</a>
Background:	Cytosolic CRABPs may regulate the access of retinoic acid to the nuclear retinoic acid receptors.



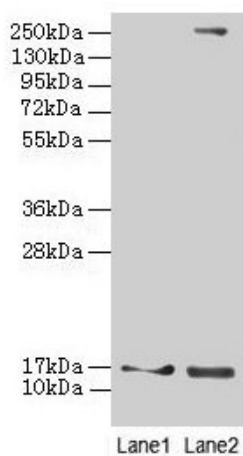
[View online »](#)

**Product images:**

Immunohistochemistry of paraffin-embedded human breast cancer using [TA387483] at dilution of 1:100



Immunohistochemistry of paraffin-embedded human thyroid tissue using [TA387483] at dilution of 1:100



Western blot

All lanes: CRABP1 antibody at 4µg/ml

Lane 1: Mouse eye tissue

Lane 2: THP-1 whole cell lysate

Secondary

Goat polyclonal to rabbit IgG at 1/10000 dilution

Predicted band size: 16 kDa

Observed band size: 16 kDa