

## Product datasheet for **TA387479M**

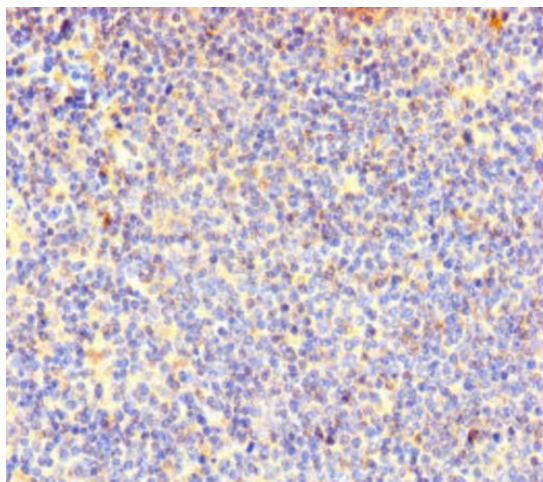
### COTL1 Rabbit Polyclonal Antibody

#### Product data:

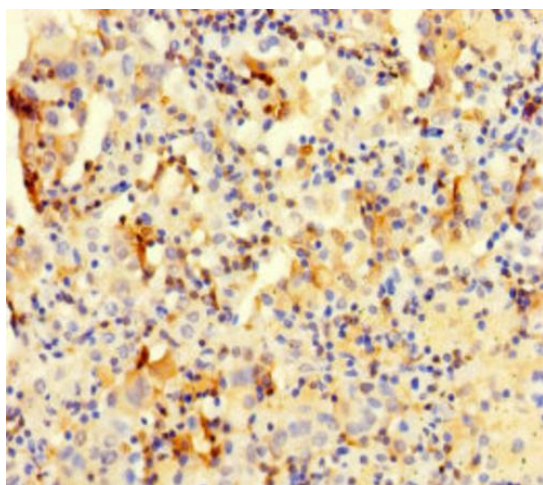
Product Type:	Primary Antibodies
Applications:	IHC, WB
Recommended Dilution:	Recommended dilution: WB:1:500-1:5000, IHC:1:20-1:200
Reactivity:	Mouse, Human
Host:	Rabbit
Isotype:	IgG
Clonality:	Polyclonal
Immunogen:	Recombinant Human Coactosin-like protein (2-142AA)
Formulation:	Preservative: 0.03% Proclin 300 Constituents: 50% Glycerol, 0.01M PBS, PH 7.4
Concentration:	lot specific
Purification:	>95%, Protein G purified
Conjugation:	Unconjugated
Storage:	Upon receipt, store at -20°C or -80°C. Avoid repeated freeze.
Stability:	1 year from dispatch.
Database Link:	<a href="#">Q14019</a>
Background:	Binds to F-actin in a calcium-independent manner. Has no direct effect on actin depolymerization. Acts as a chaperone for ALOX5 (5LO), influencing both its stability and activity in leukotrienes synthesis.

[View online »](#)

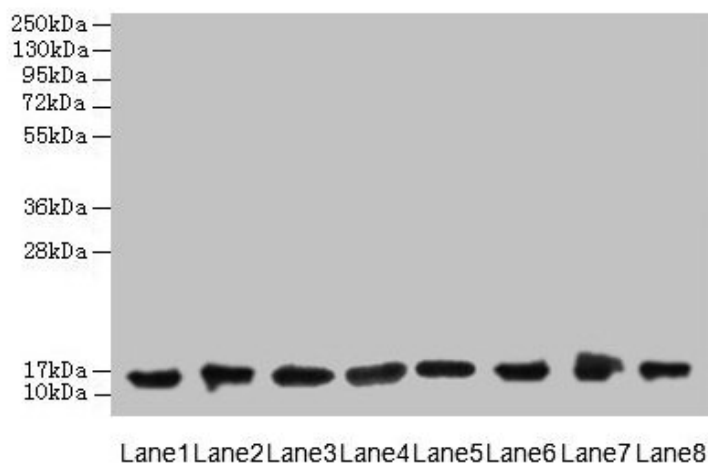
## Product images:



Immunohistochemistry of paraffin-embedded human lymphoid tissue using [TA387479] at dilution of 1:100



Immunohistochemistry of paraffin-embedded human lung cancer using [TA387479] at dilution of 1:100



Western blot

All lanes: COTL1 antibody at 8µg/ml

Lane 1: Mouse brain tissue

Lane 2: Hela whole cell lysate

Lane 3: Mouse kidney tissue

Lane 4: HepG2 whole cell lysate

Lane 5: Mouse thymus tissue

Lane 6: U87 whole cell lysate

Lane 7: HL60 whole cell lysate

Lane 8: A549 whole cell lysate

Secondary

Goat polyclonal to rabbit IgG at 1/10000 dilution

Predicted band size: 16 kDa

Observed band size: 16 kDa