

## Product datasheet for **TA387475M**

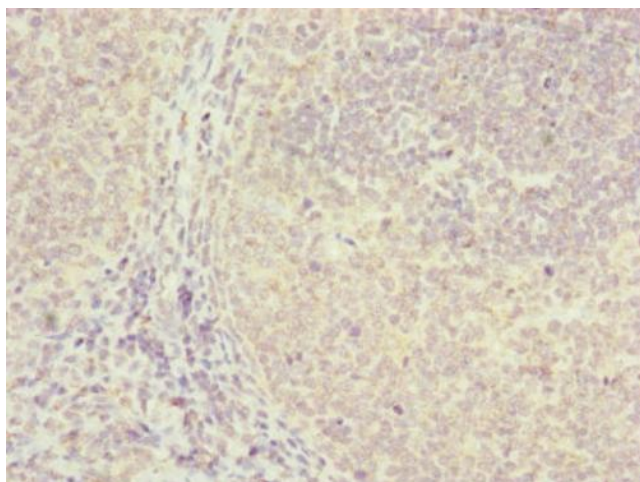
### **FBXO22 Rabbit Polyclonal Antibody**

#### **Product data:**

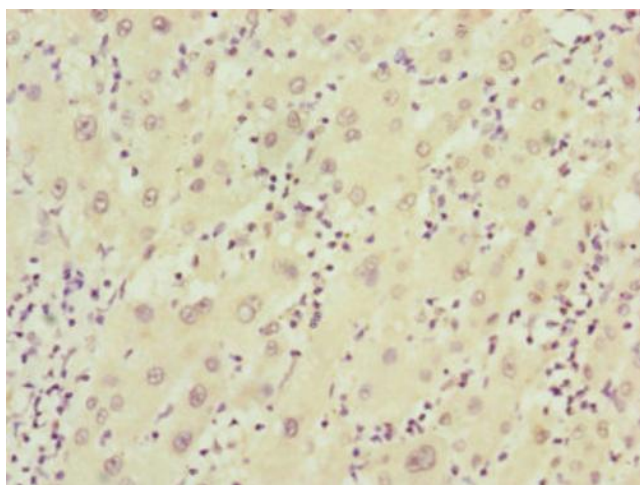
Product Type:	Primary Antibodies
Applications:	IHC, WB
Recommended Dilution:	Recommended dilution: WB:1:1000-1:5000, IHC:1:20-1:200
Reactivity:	Mouse, Human
Host:	Rabbit
Isotype:	IgG
Clonality:	Polyclonal
Immunogen:	Recombinant Human F-box only protein 22 protein (104-403AA)
Formulation:	PBS with 0.02% sodium azide, 50% glycerol, pH7.3.
Concentration:	lot specific
Purification:	Antigen Affinity Purified
Conjugation:	Unconjugated
Storage:	Upon receipt, store at -20°C or -80°C. Avoid repeated freeze.
Stability:	1 year from dispatch.
Database Link:	<a href="#"><u>Q8NEZ5</u></a>
Background:	Substrate-recognition component of the SCF (SKP1-CUL1-F-box protein)-type E3 ubiquitin ligase complex. Promotes the proteasome-dependent degradation of key sarcomeric proteins, such as alpha-actinin (ACTN2) and filamin-C (FLNC), essential for maintenance of normal contractile function.

[View online »](#)

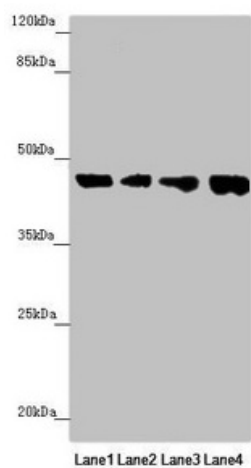
**Product images:**



Immunohistochemistry of paraffin-embedded human tonsil tissue using [TA387475] at dilution of 1:100



Immunohistochemistry of paraffin-embedded human liver cancer using [TA387475] at dilution of 1:100



#### Western blot

All lanes: FBXO22 antibody at 1.98 $\mu$ g/ml

Lane 1: Mouse heart tissue

Lane 2: Hela whole cell lysate

Lane 3: MCF-7 whole cell lysate

Lane 4: HepG2 whole cell lysate

#### Secondary

Goat polyclonal to rabbit IgG at 1/10000 dilution

Predicted band size: 45, 5, 31 kDa

Observed band size: 45 kDa