

## Product datasheet for **TA387472M**

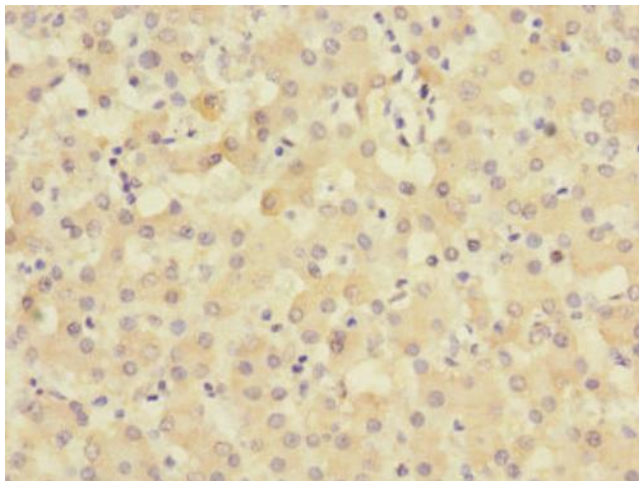
### **TIMM50 Rabbit Polyclonal Antibody**

#### **Product data:**

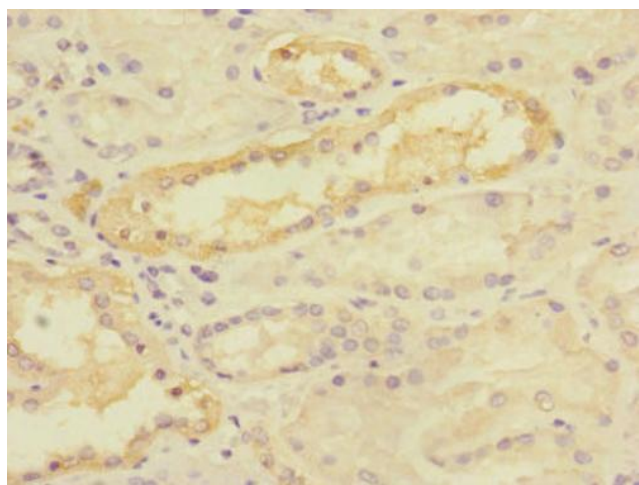
Product Type:	Primary Antibodies
Applications:	IHC, WB
Recommended Dilution:	Recommended dilution: WB:1:1000-1:5000, IHC:1:20-1:200
Reactivity:	Rat, Human
Host:	Rabbit
Isotype:	IgG
Clonality:	Polyclonal
Immunogen:	Recombinant Human Mitochondrial import inner membrane translocase subunit TIM50 protein (87-353AA)
Formulation:	PBS with 0.02% sodium azide, 50% glycerol, pH7.3.
Concentration:	lot specific
Purification:	Antigen Affinity Purified
Conjugation:	Unconjugated
Storage:	Upon receipt, store at -20°C or -80°C. Avoid repeated freeze.
Stability:	1 year from dispatch.
Database Link:	<a href="#">Q3ZCQ8</a>
Background:	Essential component of the TIM23 complex, a complex that mediates the translocation of transit peptide-containing proteins across the mitochondrial inner membrane. Has some phosphatase activity in vitro; however such activity may not be relevant in vivo. Isoform 2 may participate in the release of snRNPs and SMN from the Cajal body.



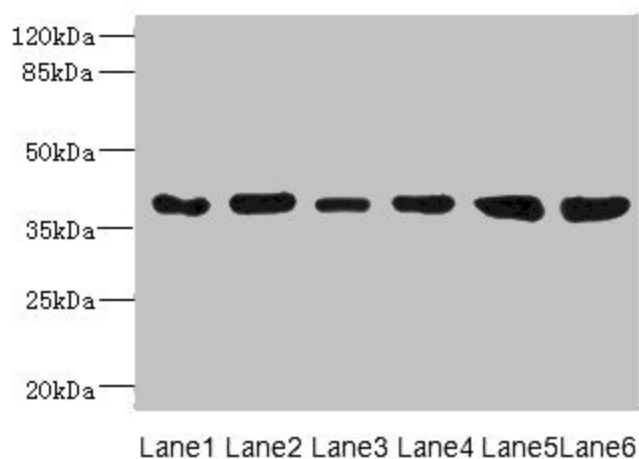
[View online »](#)

**Product images:**

Immunohistochemistry of paraffin-embedded human liver tissue using [TA387472] at dilution of 1:100



Immunohistochemistry of paraffin-embedded human kidney tissue using [TA387472] at dilution of 1:100



#### Western blot

All lanes: TIMM50 antibody at 4.05µg/ml

Lane 1: Rat heart tissue

Lane 2: MM231 whole cell lysate

Lane 3: MCF-7 whole cell lysate

Lane 4: Hela whole cell lysate

Lane 5: 293T whole cell lysate

Lane 6: HepG2 whole cell lysate

Secondary

Goat polyclonal to rabbit IgG at 1/10000 dilution

Predicted band size: 40, 51, 28 kDa

Observed band size: 40 kDa