

## Product datasheet for **TA387469M**

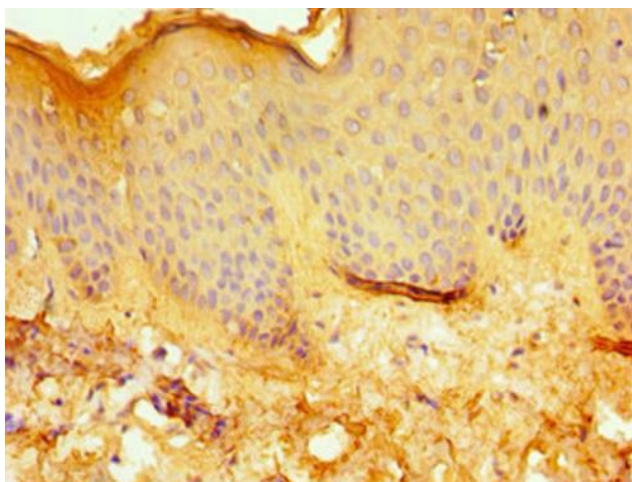
### ERCC2 Rabbit Polyclonal Antibody

#### Product data:

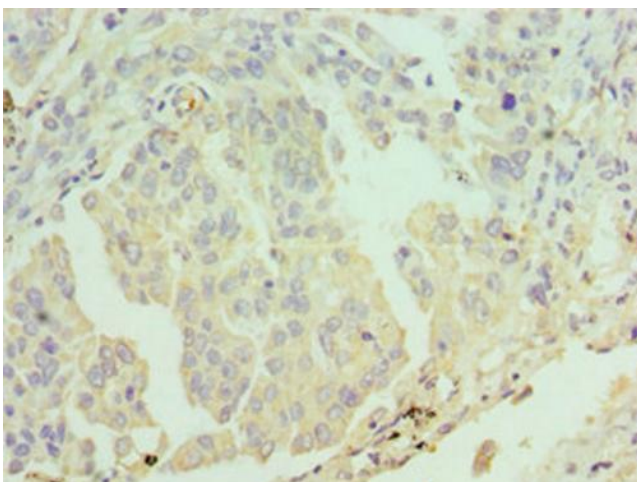
Product Type:	Primary Antibodies
Applications:	IHC, WB
Recommended Dilution:	Recommended dilution: WB:1:500-1:2000, IHC:1:20-1:200
Reactivity:	Human
Host:	Rabbit
Isotype:	IgG
Clonality:	Polyclonal
Immunogen:	Recombinant Human TFIIH basal transcription factor complex helicase XPD subunit protein (1-300AA)
Formulation:	PBS with 0.02% sodium azide, 50% glycerol, pH7.3.
Concentration:	lot specific
Purification:	Antigen Affinity Purified
Conjugation:	Unconjugated
Storage:	Upon receipt, store at -20°C or -80°C. Avoid repeated freeze.
Stability:	1 year from dispatch.
Database Link:	<a href="#">P18074</a>
Background:	ATP-dependent 5'-3' DNA helicase, component of the core-TFIIH basal transcription factor. Involved in nucleotide excision repair (NER) of DNA by opening DNA around the damage, and in RNA transcription by RNA polymerase II by anchoring the CDK-activating kinase (CAK) complex, composed of CDK7, cyclin H and MAT1, to the core-TFIIH complex. Involved in the regulation of vitamin-D receptor activity. As part of the mitotic spindle-associated MMXD complex it plays a role in chromosome segregation. Might have a role in aging process and could play a causative role in the generation of skin cancers.

[View online »](#)

**Product images:**



Immunohistochemistry of paraffin-embedded human skin tissue using [TA387469] at dilution of 1:100



Immunohistochemistry of paraffin-embedded human lung cancer using [TA387469] at dilution of 1:100



Western blot

All lanes: TFIIF basal transcription factor complex  
helicase XPD subunit antibody at 2µg/ml

Lane 1: 293T whole cell lysate

Lane 2: K562 whole cell lysate

Secondary

Goat polyclonal to rabbit IgG at 1/10000 dilution

Predicted band size: 87, 47 kDa

Observed band size: 87 kDa