

Product datasheet for **TA387468M**

MTX2 Rabbit Polyclonal Antibody

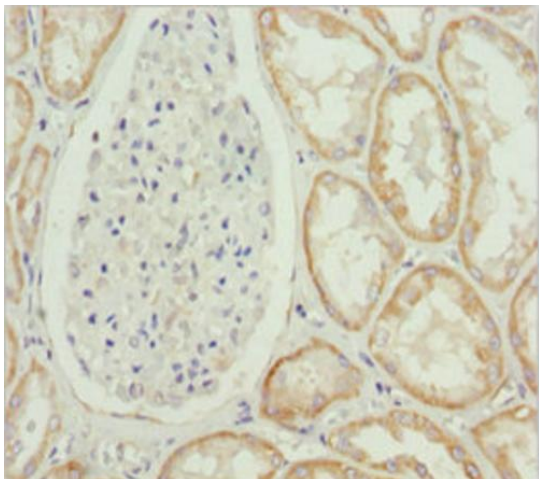
Product data:

Product Type:	Primary Antibodies
Applications:	IF, IHC, WB
Recommended Dilution:	Recommended dilution: WB:1:500-1:2000, IHC:1:20-1:200, IF:1:50-1:200
Reactivity:	Mouse, Human
Host:	Rabbit
Isotype:	IgG
Clonality:	Polyclonal
Immunogen:	Recombinant Human Metaxin-2 protein (1-263AA)
Formulation:	PBS with 0.02% sodium azide, 50% glycerol, pH7.3.
Concentration:	lot specific
Purification:	Antigen Affinity Purified
Conjugation:	Unconjugated
Storage:	Upon receipt, store at -20°C or -80°C. Avoid repeated freeze.
Stability:	1 year from dispatch.
Database Link:	<u>O75431</u>
Background:	Involved in transport of proteins into the mitochondrion.

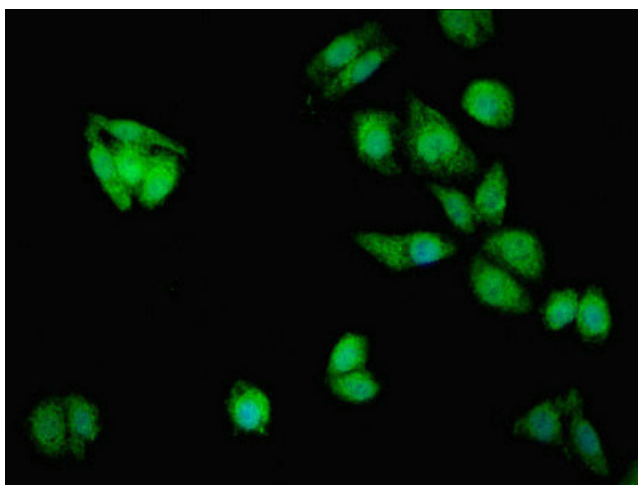


[View online »](#)

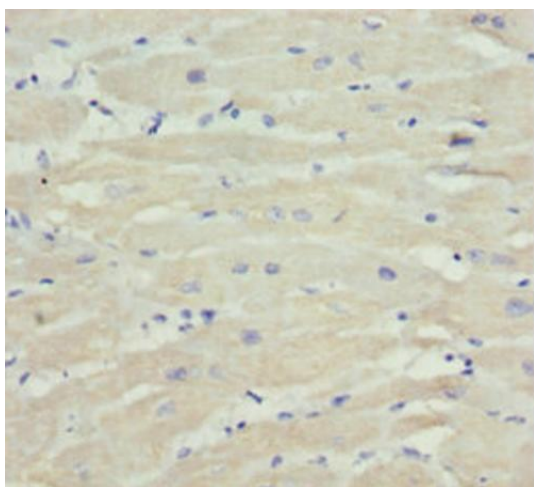
Product images:



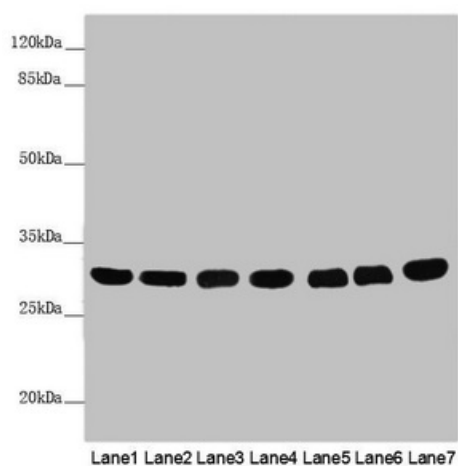
Immunohistochemistry of paraffin-embedded human kidney tissue using [TA387468] at dilution of 1:100



Immunofluorescent analysis of HepG2 cells using [TA387468] at dilution of 1:100 and Alexa Fluor 488-conjugated AffiniPure Goat Anti-Rabbit IgG(H+L)



Immunohistochemistry of paraffin-embedded human heart tissue using [TA387468] at dilution of 1:100



Western blot

All lanes: MTX2 antibody at 3.79 µg/ml

Lane 1: Mouse heart tissue

Lane 2: Mouse kidney tissue

Lane 3: Mouse liver tissue

Lane 4: Jurkat whole cell lysate

Lane 5: MCF-7 whole cell lysate

Lane 6: HepG2 whole cell lysate

Lane 7: 293T whole cell lysate

Secondary

Goat polyclonal to rabbit IgG at 1/10000 dilution

Predicted band size: 30, 29 kDa

Observed band size: 30 kDa