

Product datasheet for **TA387468**

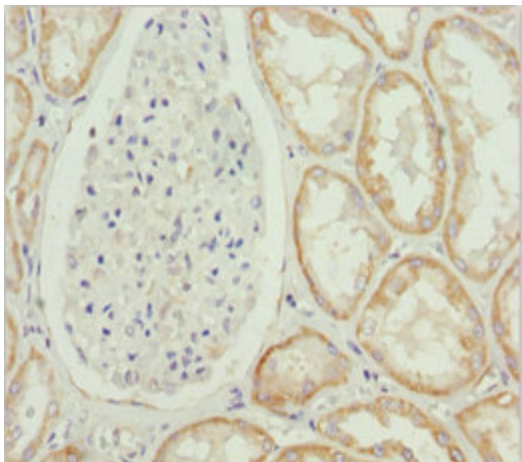
MTX2 Rabbit Polyclonal Antibody

Product data:

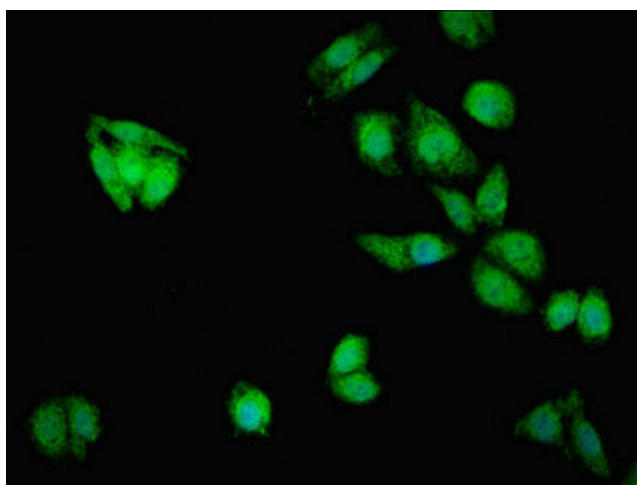
Product Type:	Primary Antibodies
Applications:	IF, IHC, WB
Recommended Dilution:	Recommended dilution: WB:1:500-1:2000, IHC:1:20-1:200, IF:1:50-1:200
Reactivity:	Mouse, Human
Host:	Rabbit
Isotype:	IgG
Clonality:	Polyclonal
Immunogen:	Recombinant Human Metaxin-2 protein (1-263AA)
Formulation:	PBS with 0.02% sodium azide, 50% glycerol, pH7.3.
Concentration:	lot specific
Purification:	Antigen Affinity Purified
Conjugation:	Unconjugated
Storage:	Upon receipt, store at -20°C or -80°C. Avoid repeated freeze.
Stability:	1 year from dispatch.
Database Link:	O75431
Background:	Involved in transport of proteins into the mitochondrion.



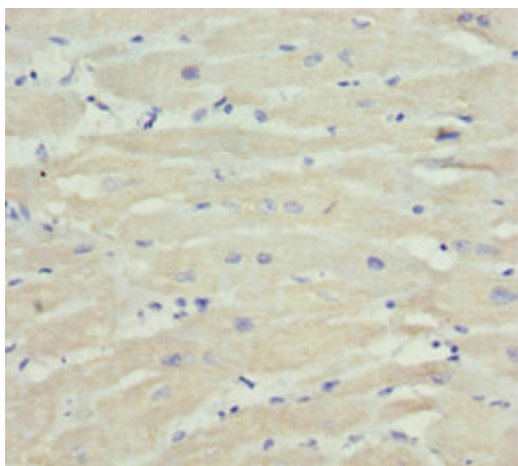
[View online »](#)

Product images:

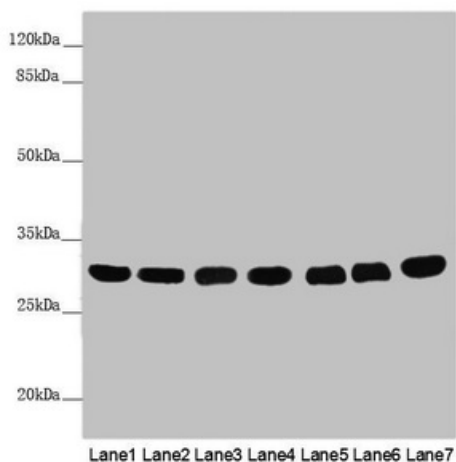
Immunohistochemistry of paraffin-embedded human kidney tissue using TA387468 at dilution of 1:100



Immunofluorescent analysis of HepG2 cells using TA387468 at dilution of 1:100 and Alexa Fluor 488-conjugated AffiniPure Goat Anti-Rabbit IgG(H+L)



Immunohistochemistry of paraffin-embedded human heart tissue using TA387468 at dilution of 1:100



Western blot
 All lanes: MTX2 antibody at 3.79 µg/ml
 Lane 1: Mouse heart tissue
 Lane 2: Mouse kidney tissue
 Lane 3: Mouse liver tissue
 Lane 4: Jurkat whole cell lysate
 Lane 5: MCF-7 whole cell lysate
 Lane 6: HepG2 whole cell lysate
 Lane 7: 293T whole cell lysate
 Secondary
 Goat polyclonal to rabbit IgG at 1/10000 dilution
 Predicted band size: 30, 29 kDa
 Observed band size: 30 kDa