

## Product datasheet for **TA387467M**

### MTX2 Rabbit Polyclonal Antibody

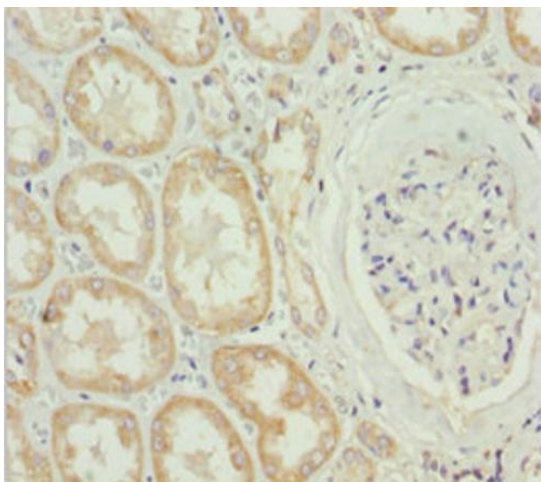
#### Product data:

Product Type:	Primary Antibodies
Applications:	IF, IHC, WB
Recommended Dilution:	Recommended dilution: WB:1:500-1:2000, IHC:1:20-1:200, IF:1:50-1:200
Reactivity:	Mouse, Human
Host:	Rabbit
Isotype:	IgG
Clonality:	Polyclonal
Immunogen:	Recombinant Human Metaxin-2 protein (1-263AA)
Formulation:	PBS with 0.02% sodium azide, 50% glycerol, pH7.3.
Concentration:	lot specific
Purification:	Antigen Affinity Purified
Conjugation:	Unconjugated
Storage:	Upon receipt, store at -20°C or -80°C. Avoid repeated freeze.
Stability:	1 year from dispatch.
Database Link:	<a href="#">O75431</a>
Background:	Involved in transport of proteins into the mitochondrion.

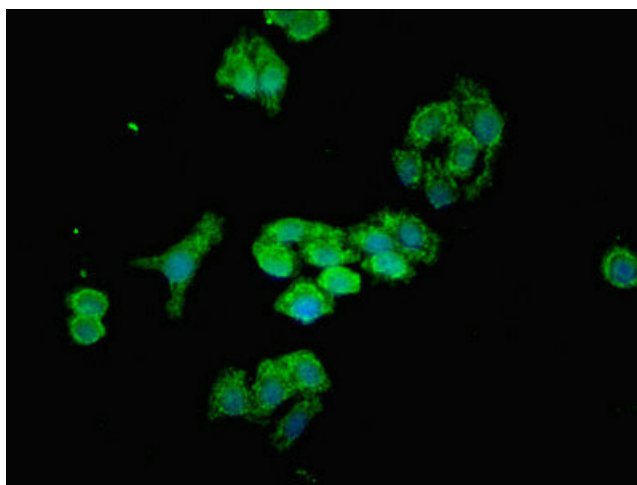


[View online »](#)

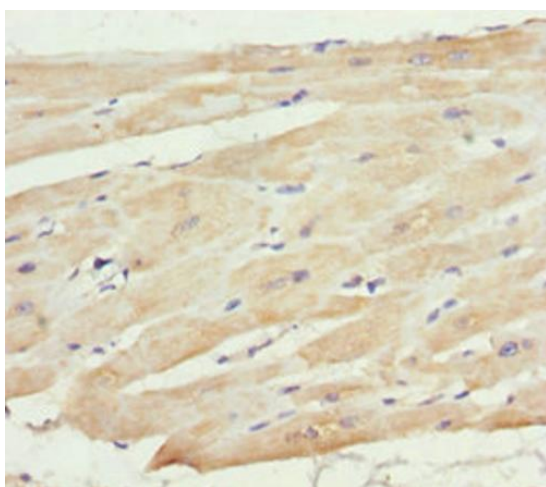
## Product images:



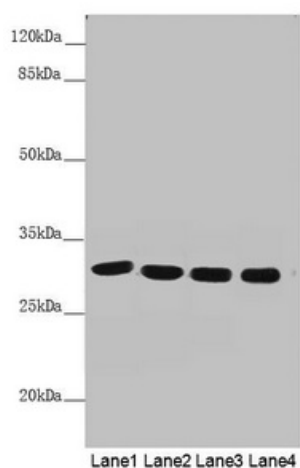
Immunohistochemistry of paraffin-embedded human kidney tissue using [TA387467] at dilution of 1:100



Immunofluorescent analysis of HepG2 cells using [TA387467] at dilution of 1:100 and Alexa Fluor 488-conjugated AffiniPure Goat Anti-Rabbit IgG(H+L)



Immunohistochemistry of paraffin-embedded human heart tissue using [TA387467] at dilution of 1:100



#### Western blot

All lanes: MTX2 antibody at 4.53 µg/ml

Lane 1: Mouse heart tissue

Lane 2: Mouse kidney tissue

Lane 3: Jurkat whole cell lysate

Lane 4: Mouse liver tissue

Secondary

Goat polyclonal to rabbit IgG at 1/10000 dilution

Predicted band size: 30, 29 kDa

Observed band size: 30 kDa