

## Product datasheet for **TA387456**

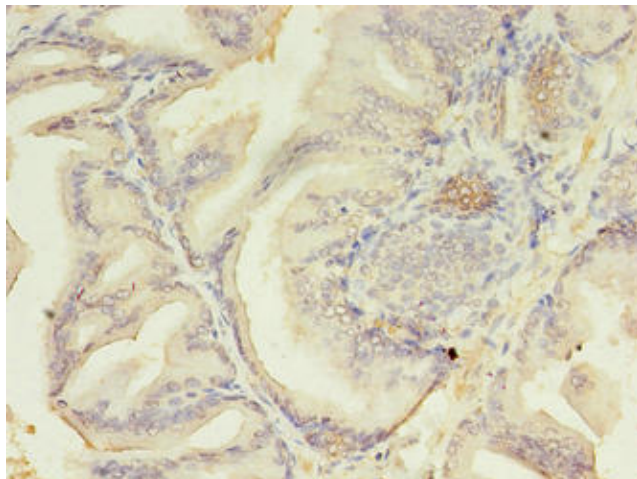
### AZGP1 Rabbit Polyclonal Antibody

#### Product data:

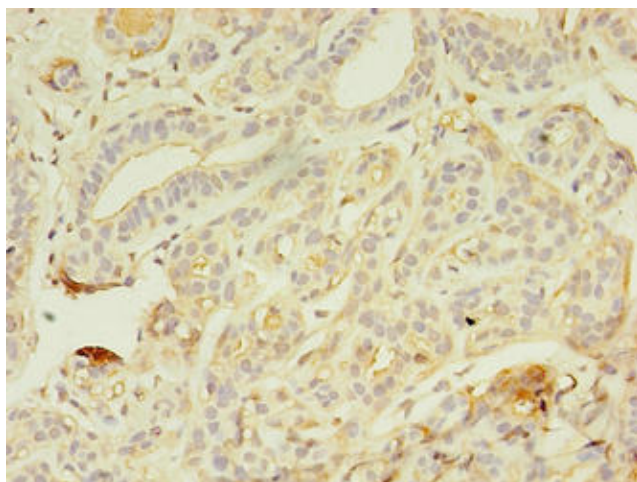
Product Type:	Primary Antibodies
Applications:	IHC, WB
Recommended Dilution:	Recommended dilution: WB:1:500-1:5000, IHC:1:20-1:200
Reactivity:	Human
Host:	Rabbit
Isotype:	IgG
Clonality:	Polyclonal
Immunogen:	Recombinant Human Zinc-alpha-2-glycoprotein protein (61-210AA)
Formulation:	Preservative: 0.03% Proclin 300 Constituents: 50% Glycerol, 0.01M PBS, PH 7.4
Concentration:	lot specific
Purification:	>95%, Protein G purified
Conjugation:	Unconjugated
Storage:	Upon receipt, store at -20°C or -80°C. Avoid repeated freeze.
Stability:	1 year from dispatch.
Database Link:	<a href="#">P25311</a>
Background:	Stimulates lipid degradation in adipocytes and causes the extensive fat losses associated with some advanced cancers. May bind polyunsaturated fatty acids.



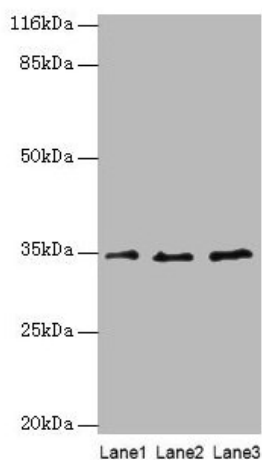
[View online »](#)

**Product images:**

Immunohistochemistry of paraffin-embedded human prostate cancer using TA387456 at dilution of 1:100



Immunohistochemistry of paraffin-embedded human breast cancer using TA387456 at dilution of 1:100

**Western blot**

All lanes: AZGP1 antibody at 4 $\mu$ g/ml

Lane 1: PC-3 whole cell lysate

Lane 2: HepG2 whole cell lysate

Lane 3: K562 whole cell lysate

**Secondary**

Goat polyclonal to rabbit IgG at 1/10000 dilution

Predicted band size: 35 kDa

Observed band size: 35 kDa