

Product datasheet for **TA387455M**

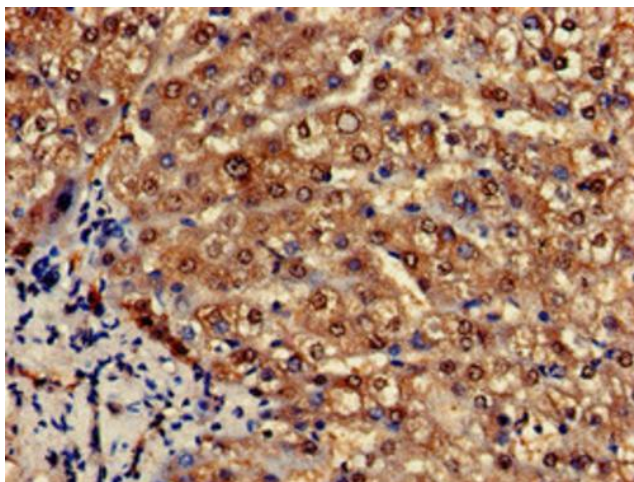
PCCA Rabbit Polyclonal Antibody

Product data:

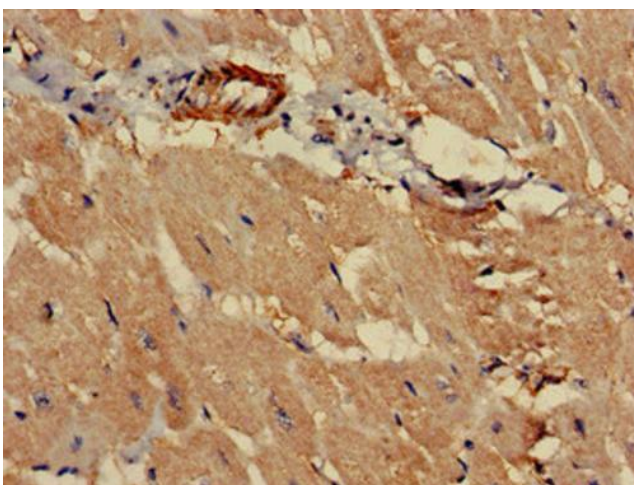
Product Type:	Primary Antibodies
Applications:	IHC, WB
Recommended Dilution:	Recommended dilution: WB:1:500-1:5000, IHC:1:20-1:200
Reactivity:	Mouse, Human
Host:	Rabbit
Isotype:	IgG
Clonality:	Polyclonal
Immunogen:	Recombinant Human Propionyl-CoA carboxylase alpha chain, mitochondrial protein (585-720AA)
Formulation:	Preservative: 0.03% Proclin 300 Constituents: 50% Glycerol, 0.01M PBS, pH 7.4
Concentration:	lot specific
Purification:	>95%, Protein G purified
Conjugation:	Unconjugated
Storage:	Upon receipt, store at -20°C or -80°C. Avoid repeated freeze.
Stability:	1 year from dispatch.
Database Link:	P05165
Background:	cytosol, mitochondrial matrix, biotin binding, enzyme binding, propionyl-CoA carboxylase activity, biotin metabolic process, short-chain fatty acid catabolic process

[View online »](#)

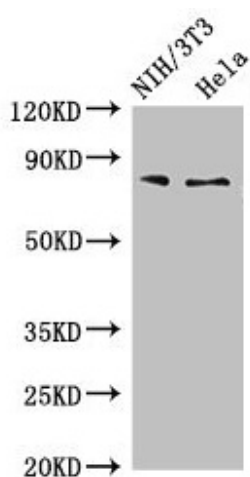
Product images:



Immunohistochemistry of paraffin-embedded human liver tissue using [TA387455] at dilution of 1:100



Immunohistochemistry of paraffin-embedded human heart tissue using [TA387455] at dilution of 1:100



Western Blot

Positive WB detected in: NIH/3T3 whole cell lysate, HeLa whole cell lysate

All lanes: PCCA antibody at 4 μ g/ml

Secondary

Goat polyclonal to rabbit IgG at 1/50000 dilution

Predicted band size: 81, 78, 76 kDa

Observed band size: 81 kDa