

## Product datasheet for **TA387453M**

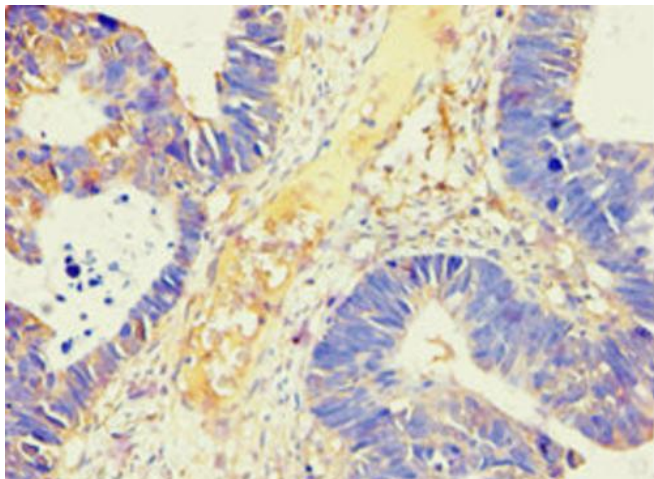
### AMY2B Rabbit Polyclonal Antibody

#### Product data:

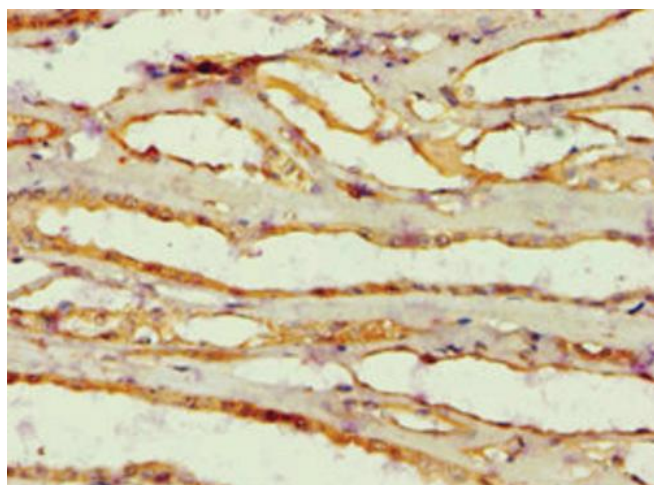
Product Type:	Primary Antibodies
Applications:	IHC, WB
Recommended Dilution:	Recommended dilution: WB:1:200-1:1000, IHC:1:20-1:200
Reactivity:	Mouse, Human
Host:	Rabbit
Isotype:	IgG
Clonality:	Polyclonal
Immunogen:	Recombinant Human Alpha-amylase 2B protein (16-320AA)
Formulation:	PBS with 0.02% sodium azide, 50% glycerol, pH7.3.
Concentration:	lot specific
Purification:	Antigen Affinity Purified
Conjugation:	Unconjugated
Storage:	Upon receipt, store at -20°C or -80°C. Avoid repeated freeze.
Stability:	1 year from dispatch.
Database Link:	<a href="#">P19961</a>
Background:	Amylases are secreted proteins that hydrolyze 1,4-alpha-glucoside bonds in oligosaccharides and polysaccharides, and thus catalyze the first step in digestion of dietary starch and glycogen. The human genome has a cluster of several amylase genes that are expressed at high levels in either salivary gland or pancreas. This gene encodes an amylase isoenzyme produced by the pancreas.

[View online »](#)

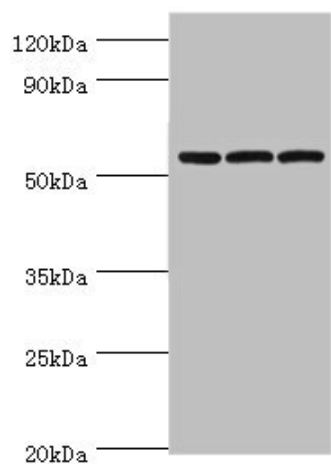
## Product images:



Immunohistochemistry of paraffin-embedded human ovarian cancer using [TA387453] at dilution of 1:100



Immunohistochemistry of paraffin-embedded human kidney tissue using [TA387453] at dilution of 1:100



## Western blot

All lanes: Alpha-amylase 2B antibody at 8µg/ml

Lane 1: Mouse skeletal muscle tissue

Lane 2: HL60 whole cell lysate

Lane 3: K562 whole cell lysate

## Secondary

Goat polyclonal to rabbit IgG at 1/10000 dilution

Predicted band size: 58, 43 kDa

Observed band size: 58 kDa