

Product datasheet for **TA387448**

AMT Rabbit Polyclonal Antibody

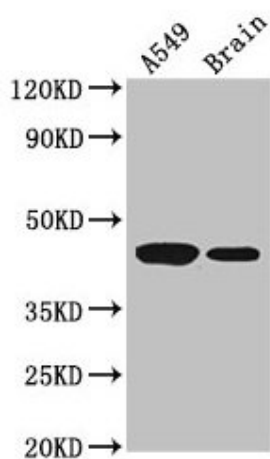
Product data:

Product Type:	Primary Antibodies
Applications:	WB
Recommended Dilution:	Recommended dilution: WB:1:500-1:5000
Reactivity:	Mouse, Human
Host:	Rabbit
Isotype:	IgG
Clonality:	Polyclonal
Immunogen:	Recombinant Human Aminomethyltransferase, mitochondrial protein (180-260AA)
Formulation:	Preservative: 0.03% Proclin 300 Constituents: 50% Glycerol, 0.01M PBS, PH 7.4
Concentration:	lot specific
Purification:	>95%, Protein G purified
Conjugation:	Unconjugated
Storage:	Upon receipt, store at -20°C or -80°C. Avoid repeated freeze.
Stability:	1 year from dispatch.
Database Link:	P48728
Background:	The glycine cleavage system catalyzes the degradation of glycine.



[View online »](#)

Product images:



Western Blot

Positive WB detected in: A549 whole cell lysate,
Mouse brain tissue

All lanes: AMT antibody at 3.5 μ g/ml

Secondary

Goat polyclonal to rabbit IgG at 1/50000 dilution

Predicted band size: 44, 38, 40, 42 kDa

Observed band size: 44 kDa