

Product datasheet for **TA387447M**

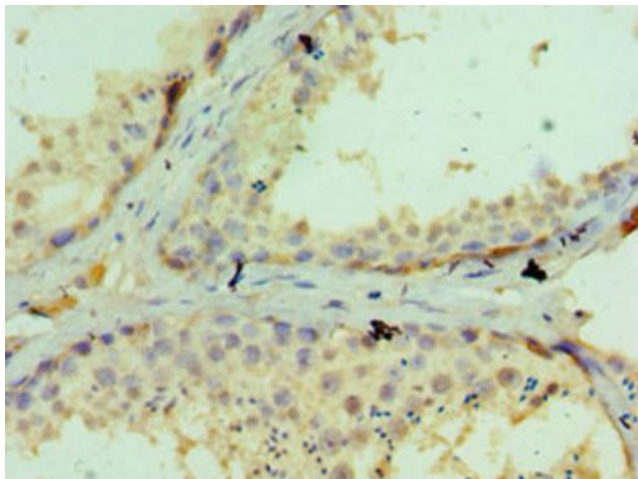
GLRX3 Rabbit Polyclonal Antibody

Product data:

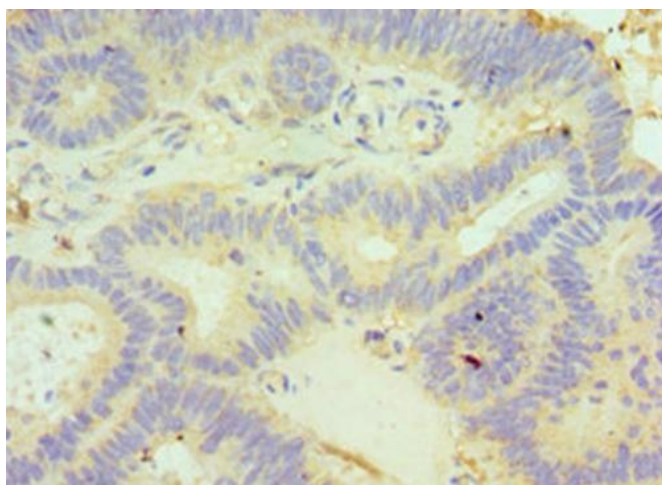
Product Type:	Primary Antibodies
Applications:	IHC, IP, WB
Recommended Dilution:	Recommended dilution: WB:1:1000-1:5000, IHC:1:20-1:200, IP:1:200-1:2000
Reactivity:	Rat, Human
Host:	Rabbit
Isotype:	IgG
Clonality:	Polyclonal
Immunogen:	Recombinant Human Glutaredoxin-3 protein (1-335AA)
Formulation:	PBS with 0.02% sodium azide, 50% glycerol, pH7.3.
Concentration:	lot specific
Purification:	Antigen Affinity Purified
Conjugation:	Unconjugated
Storage:	Upon receipt, store at -20°C or -80°C. Avoid repeated freeze.
Stability:	1 year from dispatch.
Database Link:	O76003
Background:	Critical negative regulator of cardiac hypertrophy and a positive inotropic regulator (By similarity). Crucial regulator of cellular iron homeostasis and hemoglobin maturation. May play a role in regulating the function of the thioredoxin system. Does not possess any thioredoxin activity since it lacks the conserved motif that is essential for catalytic activity.

[View online »](#)

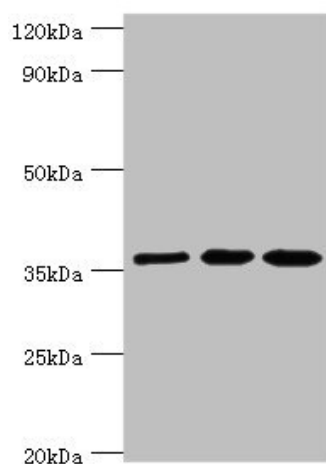
Product images:



Immunohistochemistry of paraffin-embedded human testis tissue using [TA387447] at dilution of 1:100



Immunohistochemistry of paraffin-embedded human colon cancer using [TA387447] at dilution of 1:100



Western blot

All lanes: Glutaredoxin-3 antibody at 10µg/ml

Lane 1: Rat brain tissue

Lane 2: HepG2 whole cell lysate

Lane 3: Hela whole cell lysate

Secondary

Goat polyclonal to rabbit IgG at 1/10000 dilution

Predicted band size: 37 kDa

Observed band size: 37 kDa