

Product datasheet for **TA387441M**

ASF1B Rabbit Polyclonal Antibody

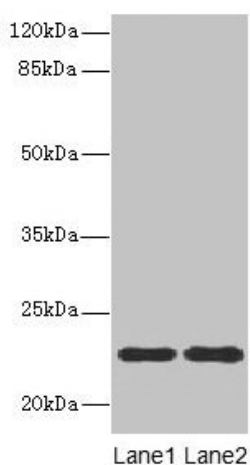
Product data:

Product Type:	Primary Antibodies
Applications:	IHC, WB
Recommended Dilution:	Recommended dilution: WB:1:1000-1:5000, IHC:1:20-1:200
Reactivity:	Human
Host:	Rabbit
Isotype:	IgG
Clonality:	Polyclonal
Immunogen:	Recombinant Human Histone chaperone ASF1B protein (1-202AA)
Formulation:	Preservative: 0.03% Proclin 300 Constituents: 50% Glycerol, 0.01M PBS, PH 7.4
Concentration:	lot specific
Purification:	>95%, Protein G purified
Conjugation:	Unconjugated
Storage:	Upon receipt, store at -20°C or -80°C. Avoid repeated freeze.
Stability:	1 year from dispatch.
Database Link:	Q9NVP2
Background:	Histone chaperone that facilitates histone deposition and histone exchange and removal during nucleosome assembly and disassembly. Cooperates with chromatin assembly factor 1 (CAF-1) to promote replication-dependent chromatin assembly. Does not participate in replication-independent nucleosome deposition which is mediated by ASF1A and HIRA. Required for spermatogenesis.



[View online »](#)

Product images:



Western blot

All lanes: ASF1B antibody at 13 μ g/ml

Lane 1: MCF-7 whole cell lysate

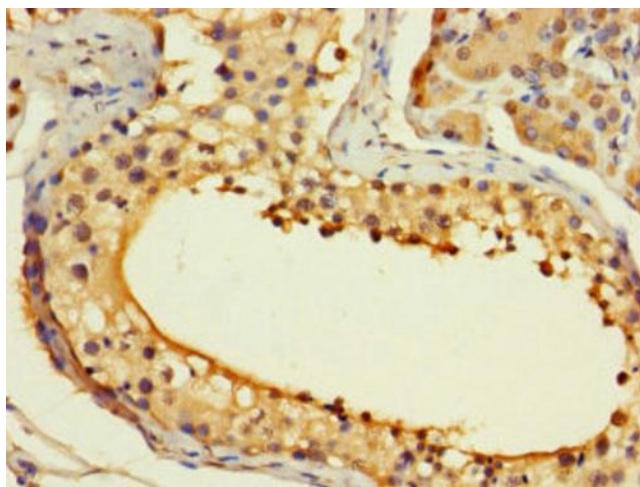
Lane 2: Jurkat whole cell lysate

Secondary

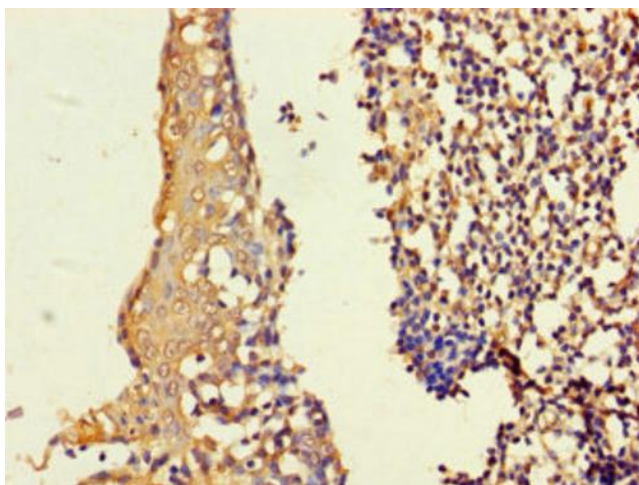
Goat polyclonal to rabbit IgG at 1/10000 dilution

Predicted band size: 23 kDa

Observed band size: 23 kDa



Immunohistochemistry of paraffin-embedded human testis tissue using [TA387441] at dilution of 1:100



Immunohistochemistry of paraffin-embedded human tonsil tissue using [TA387441] at dilution of 1:100