

## Product datasheet for **TA387439M**

### STK38L Rabbit Polyclonal Antibody

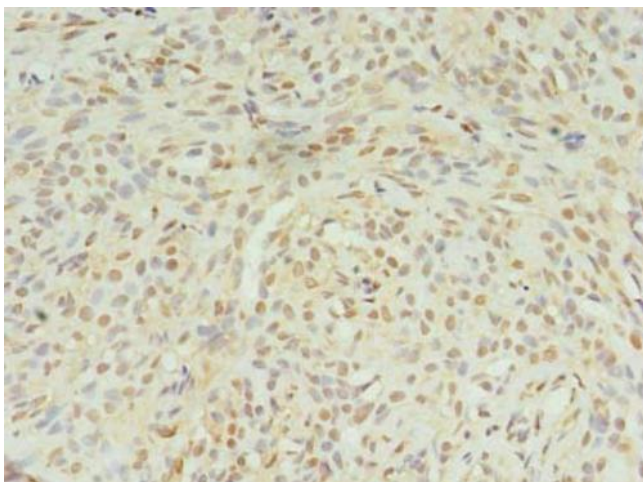
#### Product data:

Product Type:	Primary Antibodies
Applications:	IHC, WB
Recommended Dilution:	Recommended dilution: WB:1:500-1:2000, IHC:1:20-1:200
Reactivity:	Human
Host:	Rabbit
Isotype:	IgG
Clonality:	Polyclonal
Immunogen:	Recombinant Human Serine/threonine-protein kinase 38-like protein (212-464AA)
Formulation:	Preservative: 0.03% Proclin 300 Constituents: 50% Glycerol, 0.01M PBS, PH 7.4
Concentration:	lot specific
Purification:	>95%, Protein G purified
Conjugation:	Unconjugated
Storage:	Upon receipt, store at -20°C or -80°C. Avoid repeated freeze.
Stability:	1 year from dispatch.
Database Link:	<a href="#">Q9Y2H1</a>
Background:	Involved in the regulation of structural processes in differentiating and mature neuronal cells.

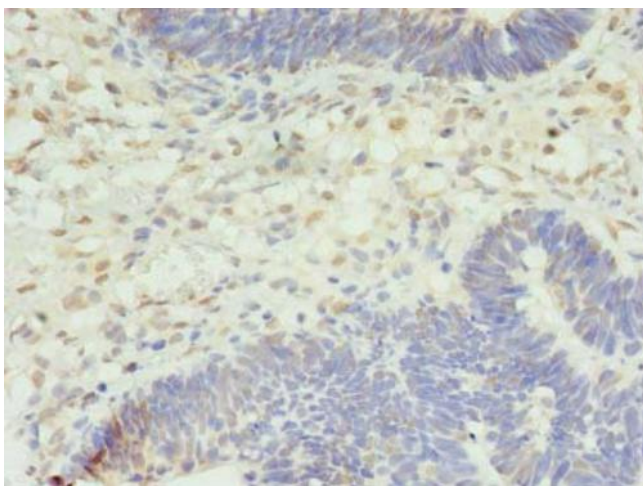


[View online »](#)

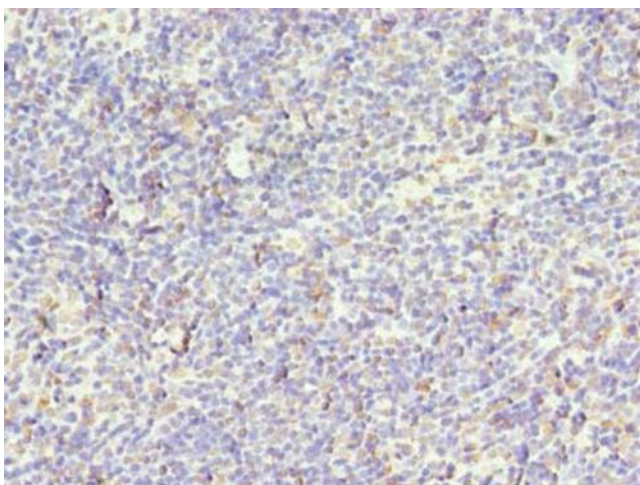
## Product images:



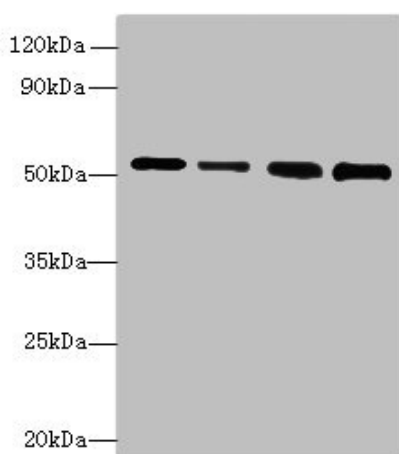
Immunohistochemistry of paraffin-embedded human breast cancer using [TA387439] at dilution of 1:100



Immunohistochemistry of paraffin-embedded human ovarian cancer using [TA387439] at dilution of 1:100



Immunohistochemistry of paraffin-embedded human thymus tissue using [TA387439] at dilution of 1:100



Western blot

All lanes: STK38L antibody at 6µg/ml

Lane 1: A375 whole cell lysate

Lane 2: HepG2 whole cell lysate

Lane 3: A549 whole cell lysate

Lane 4: HCT116 whole cell lysate

Secondary

Goat polyclonal to rabbit IgG at 1/10000 dilution

Predicted band size: 55, 44 kDa

Observed band size: 55 kDa