

## Product datasheet for **TA387431**

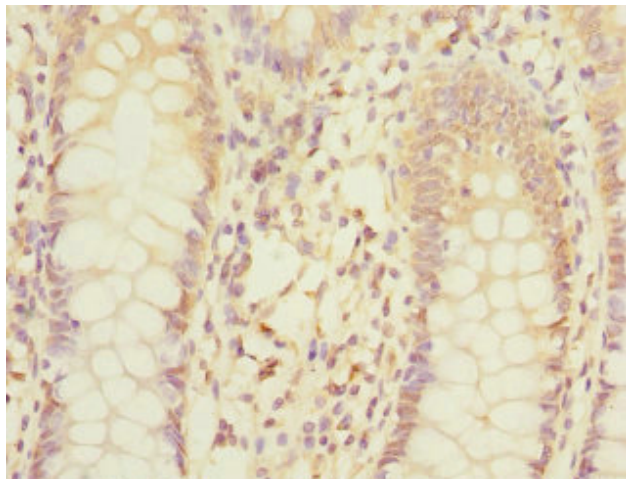
### MPI Rabbit Polyclonal Antibody

#### Product data:

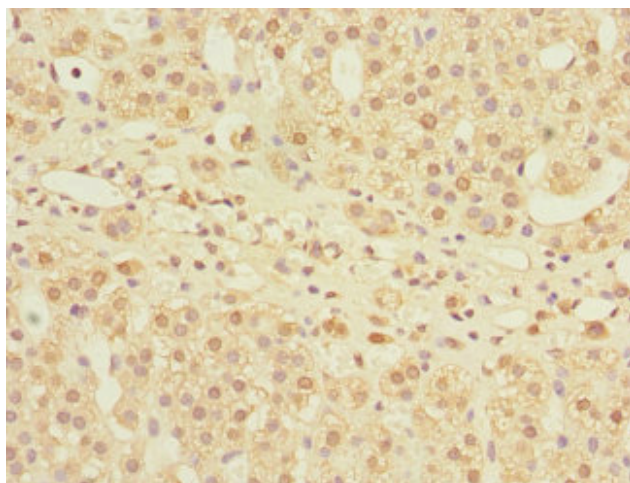
Product Type:	Primary Antibodies
Applications:	IHC, WB
Recommended Dilution:	Recommended dilution: WB:1:1000-1:5000, IHC:1:20-1:200
Reactivity:	Mouse, Human
Host:	Rabbit
Isotype:	IgG
Clonality:	Polyclonal
Immunogen:	Recombinant Human Mannose-6-phosphate isomerase protein (1-423AA)
Formulation:	PBS with 0.02% sodium azide, 50% glycerol, pH7.3.
Concentration:	lot specific
Purification:	Antigen Affinity Purified
Conjugation:	Unconjugated
Storage:	Upon receipt, store at -20°C or -80°C. Avoid repeated freeze.
Stability:	1 year from dispatch.
Database Link:	<a href="#">P34949</a>
Background:	Involved in the synthesis of the GDP-mannose and dolichol-phosphate-mannose required for a number of critical mannosyl transfer reactions.



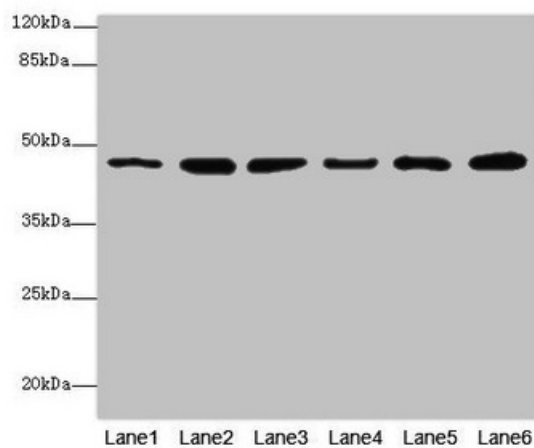
[View online »](#)

**Product images:**

Immunohistochemistry of paraffin-embedded human colon cancer using TA387431 at dilution of 1:100



Immunohistochemistry of paraffin-embedded human adrenal gland tissue using TA387431 at dilution of 1:100



#### Western blot

All lanes: MPI antibody at 5.12 $\mu$ g/ml

Lane 1: Mouse heart tissue

Lane 2: Mouse kidney tissue

Lane 3: Mouse brain tissue

Lane 4: HepG2 whole cell lysate

Lane 5: 293T whole cell lysate

Lane 6: A549 whole cell lysate

Secondary

Goat polyclonal to rabbit IgG at 1/10000 dilution

Predicted band size: 47, 40 kDa

Observed band size: 47 kDa