

Product datasheet for **TA387427M**

NAPEPLD Rabbit Polyclonal Antibody

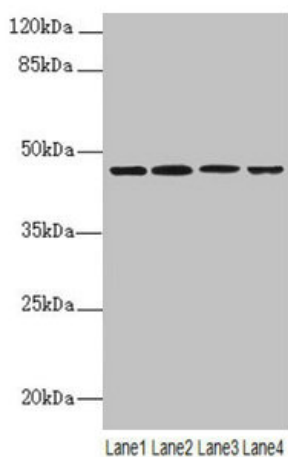
Product data:

Product Type:	Primary Antibodies
Applications:	WB
Recommended Dilution:	Recommended dilution: WB:1:1000-1:5000
Reactivity:	Mouse, Human
Host:	Rabbit
Isotype:	IgG
Clonality:	Polyclonal
Immunogen:	Recombinant Human N-acyl-phosphatidylethanolamine-hydrolyzing phospholipase D protein (1-200AA)
Formulation:	Preservative: 0.03% Proclin 300 Constituents: 50% Glycerol, 0.01M PBS, PH 7.4
Concentration:	lot specific
Purification:	>95%, Protein G purified
Conjugation:	Unconjugated
Storage:	Upon receipt, store at -20°C or -80°C. Avoid repeated freeze.
Stability:	1 year from dispatch.
Database Link:	Q6IQ20
Background:	Hydrolyzes N-acyl-phosphatidylethanolamines (NAPEs) to produce N-acylethanolamines (NAEs) and phosphatidic acid. Responsible for the generation of anandamide (N-arachidonylethanolamine), the ligand of cannabinoid and vanilloid receptors.



[View online »](#)

Product images:



Western blot

All lanes: NAPEPLD antibody at 6 μ g/ml

Lane 1: Mouse large intestine tissue

Lane 2: Mouse kidney tissue

Lane 3: Mouse stomach tissue

Lane 4: MCF-7 whole cell lysate

Secondary

Goat polyclonal to rabbit IgG at 1/10000 dilution

Predicted band size: 46 kDa

Observed band size: 46 kDa