

## Product datasheet for **TA387418**

### ABAT Rabbit Polyclonal Antibody

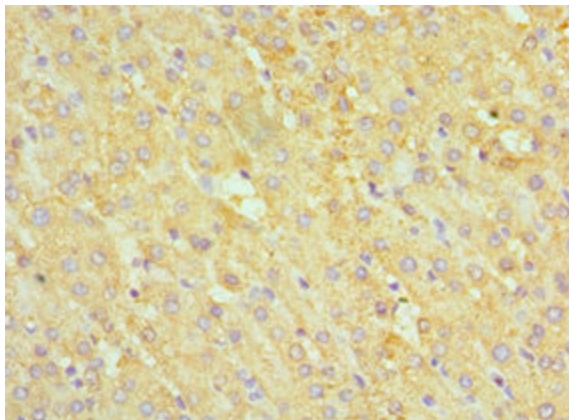
#### Product data:

Product Type:	Primary Antibodies
Applications:	IHC, WB
Recommended Dilution:	Recommended dilution: WB:1:500-1:5000, IHC:1:20-1:200
Reactivity:	Mouse, Rat, Human
Host:	Rabbit
Isotype:	IgG
Clonality:	Polyclonal
Immunogen:	Recombinant Human 4-aminobutyrate aminotransferase, mitochondrial protein (29-300AA)
Formulation:	PBS with 0.02% sodium azide, 50% glycerol, pH7.3.
Concentration:	lot specific
Purification:	Antigen Affinity purified
Conjugation:	Unconjugated
Storage:	Upon receipt, store at -20°C or -80°C. Avoid repeated freeze.
Stability:	1 year from dispatch.
Database Link:	<a href="#">P80404</a>
Background:	Catalyzes the conversion of gamma-aminobutyrate and L-beta-aminoisobutyrate to succinate semialdehyde and methylmalonate semialdehyde, respectively. Can also convert delta-aminovalerate and beta-alanine.

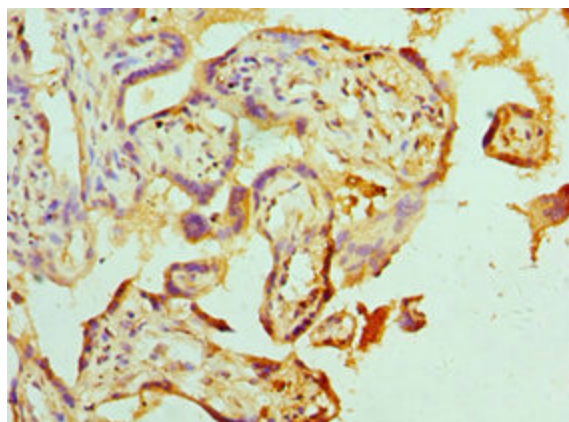


[View online »](#)

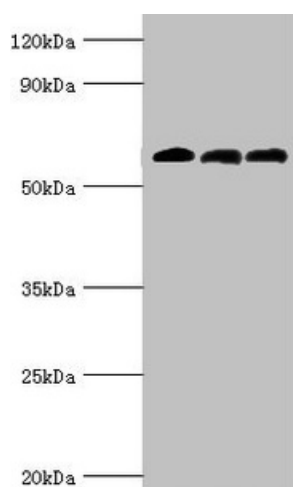
**Product images:**



Immunohistochemistry of paraffin-embedded human liver tissue using TA387418 at dilution of 1:100



Immunohistochemistry of paraffin-embedded human placenta tissue using TA387418 at dilution of 1:100



Western blot

All lanes: 4-aminobutyrate aminotransferase,  
mitochondrial antibody at 10 $\mu$ g/ml

Lane 1: Rat liver tissue

Lane 2: Mouse pancreatic tissue

Lane 3: Mouse kidney tissue

Secondary

Goat polyclonal to rabbit IgG at 1/10000 dilution

Predicted band size: 56 kDa

Observed band size: 56 kDa